

## INSTALLATION INSTRUCTIONS

Original Issue Date: **8/93**

Model: **30-45 kW (Gas/Gasoline)**

Market: **Industrial**

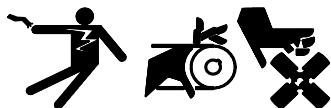
Subject: **Exhaust Mounting Kits PA-255124, PA-255124-SD, PA-255125, PA-255125-SD**

The exhaust mounting kit provides hardware to mount an exhaust silencer to the top of a generator set weather housing. Exhaust mounting kits do not include exhaust silencers.

There are separate mounting kits for critical silencers and industrial silencers.

Exhaust Mounting Kit No.	Type
PA-255124, PA-255124-SD	Critical
PA-255125, PA-255125-SD	Industrial

### ⚠ WARNING



**Accidental starting.**  
**Can cause severe injury or death.**

Disconnect battery cables before working on generator set. (Remove negative (–) lead first when disconnecting battery. Reconnect negative (–) lead last when reconnecting battery.)

**Disabling generator set. Accidental starting can cause severe injury or death.** Before working on the generator set or connected equipment, disable the generator set as follows: 1) Turn the generator set master switch to OFF position. 2) Disconnect power to battery charger. 3) Remove battery cables (remove negative (–) lead first). Reconnect negative (–) lead last when reconnecting battery. Follow these precautions to prevent starting of generator set by an automatic transfer switch or remote start/stop switch.

### ⚠ WARNING



**Hot engine and exhaust system.**  
**Can cause severe injury or death.**

Do not work on generator set until it is allowed to cool.

**Servicing exhaust system. Hot parts can cause severe injury or death.** Do not touch hot engine parts. An engine becomes hot while running and exhaust system components become extremely hot.

## Installation

1. Place the generator set master switch in the OFF position.
2. Disconnect power to battery charger, if equipped.
3. Disconnect the generator set engine starting battery, negative (–) lead first.
4. Remove all weather housing doors to expose the generator set.

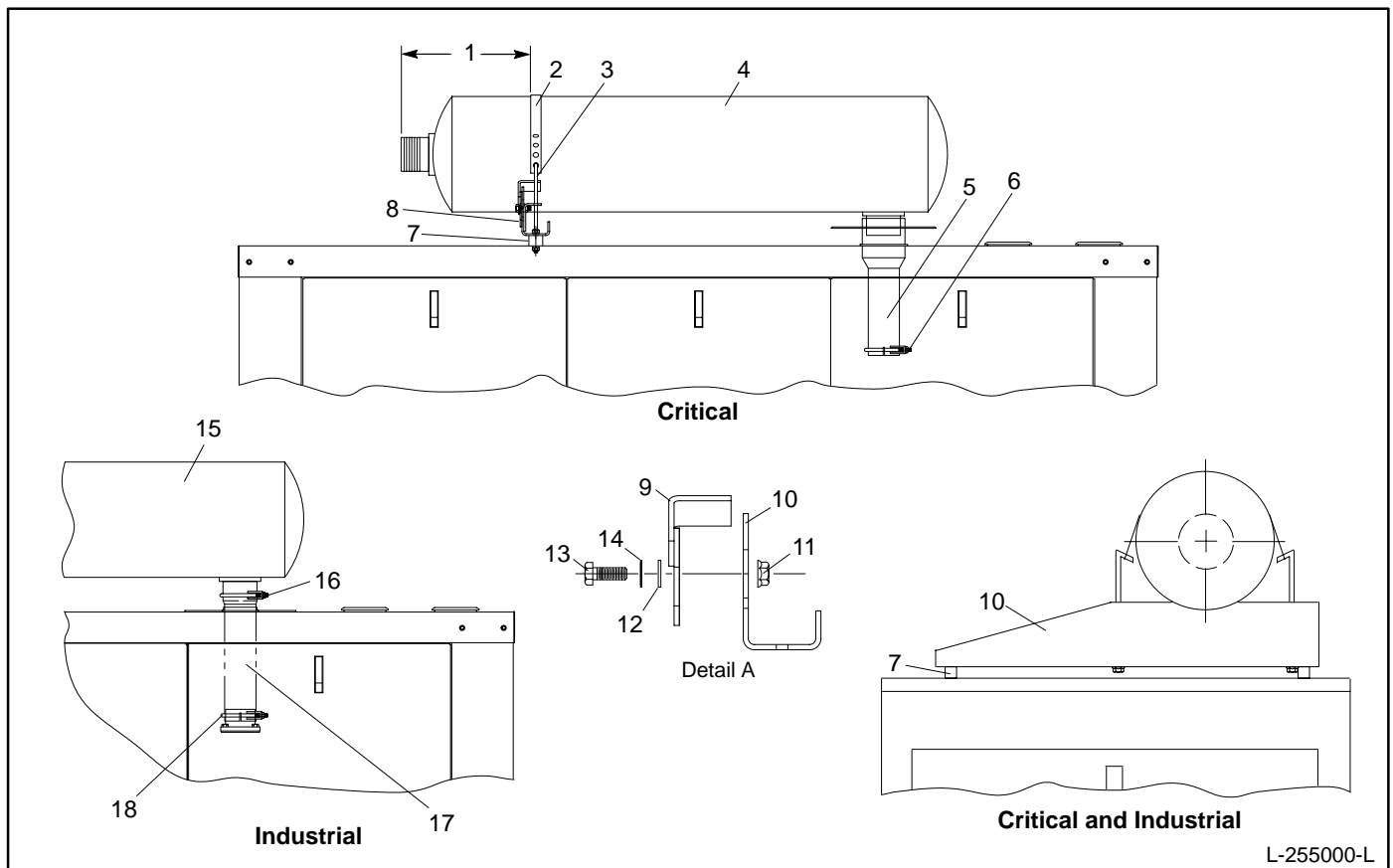
5. Use the corresponding procedure below to attach exhaust pipe to silencer.
  - a. Critical Silencer
    - (1) Apply a high-temperature pipe joint compound to the threads of the silencer inlet.
    - (2) Thread the exhaust pipe (255380) onto the silencer inlet and tighten with a pipe wrench.
  - b. Industrial Silencer
 

Attach exhaust pipe to silencer inlet with clamp (286283).
6. Secure silencer support bracket (222961) to silencer mounting bracket (222960) with screws (X-125-31), lock washers (X-22-5), flat washers (X-25-85), and spiralock nuts (X-6210-7). Do not final tighten hardware. See Figure 1.
7. Loosely attach silencer support bracket assembly to silencer using angle bolts (253307), lock nuts (X-101-8), and silencer strap (290864 or 290865). Position silencer bracket using dimensions given in Figure 1.
8. Position the silencer on the weather housing roof with the exhaust pipe inlet through the exhaust hole in the weather housing roof. Do not secure the silencer to the exhaust manifold.
9. Align the silencer as shown in Figure 1.
10. Mark the mounting hole at each end of the silencer bracket(s) on the weather housing roof.
11. Remove the silencer and mounting bracket assembly from the weather housing roof.
12. Drill two 0.281 in. (7.14 mm) diameter holes in the weather housing roof at the holes marked in step 10.
13. Install rubber isolators (259632) to the weather housing roof with whiz nuts (X-6210-2).
14. Reposition the silencer on the weather housing roof with the exhaust pipe inlet through the exhaust hole in the weather housing roof.
15. Secure the silencer bracket to the rubber isolators with screws (X-465-6) and washers (X-25-40).

**NOTE**

Exhaust pipe must overlap the engine exhaust manifold a minimum of 2 in. (50.80 mm).

16. Verify that the exhaust silencer is level and final tighten support bracket hardware.
17. Final tighten the elastic stop nuts at the ends of the angle bolts.
18. Final tighten clamp (X-722-5) connecting the silencer to the exhaust manifold.
19. Check that the generator master switch is in the OFF position.
20. Reconnect the generator set engine starting battery, negative (–) lead last. Reconnect power to the battery charger, if equipped.



1. Strap distance: industrial = 6.0 in.  $\pm$  1.0 in. (152.4 mm  $\pm$  25.4 mm) and critical = 12.0 in.  $\pm$  1.0 in. (304.8 mm  $\pm$  25.4 mm)
2. Silencer strap (290864 or 290865)
3. Angle bolt (253307) and lock nut (X-101-8)
4. Exhaust silencer
5. Exhaust adapter (255380)
6. Exhaust clamp (X-722-5)
7. Rubber mount (259632)
8. See detail A
9. Silencer support bracket (222961)
10. Silencer mounting bracket (222960)
11. Spirallock nut 5/16-18 (X-6210-7)
12. Flat washer 5/16 (X-25-85)
13. Hex. bolt 5/16-18 x 7/8 (X-125-31)
14. Internal tooth lock washer 5/16 (X-22-5)
15. Exhaust silencer (253237)
16. Exhaust clamp (286283)
17. Exhaust adapter (276248)
18. Exhaust clamp (X-722-5)

**Figure 1. Critical and Industrial Silencer Mounting**

### Silencer Mounting Kit

Parts List				
Kits: PA-255124, PA-255124-SD, PA-255125, PA-255125-SD			Unique Parts	
Qty.	Description	Common Parts	PA-255124 PA-255124-SD	PA-255125 PA-255125-SD
2	Washer, lock 5/16 internal tooth	X-22-5		
2	Washer, plain o.d. = 0.625 in.	X-25-40		
2	Washer, plain o.d. = 0.687 in.	X-25-85		
2	Nut, elastic stop nut 1/4-20	X-101-8		
2	Screw, hex cap 5/16-18 x 0.875 in.	X-125-31		
2	Screw, hex cap 1/4-20 x 0.50 in.	X-465-6		
1	Clamp, exhaust	X-722-5		
2	Nut, spirallock 1/4-20	X-6210-2		
2	Nut, spirallock 5/16-18		(4) X-6210-7	(2) X-6210-7
1	Bracket, silencer mounting	222960		
1	Bracket, silencer support	222961		
2	Bolt, angle	253307		
1	Adapter, exhaust		255380	276248
2	Mount, rubber	259632		
1	Clamp, exhaust pipe			286283
1	Strap, muffler	290864		