

---

## INSTALLATION INSTRUCTIONS

---

Original Issue Date: 2/92

Model: 20-45 kW (Gasoline)

Market: Industrial

Subject: Flexible Fuel Line Kits PA-276284, PA-276284-SD, PA-276285, PA-276285-SD, PA-326786, PA-326786-SD

### Introduction

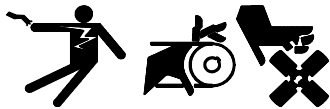
The flexible fuel line kit provides a flexible connection between the engine fuel fittings and the fuel tank plumbing. Observe all safety precautions during kit installation.

### Safety Precautions

Observe the following safety precautions while installing the kit.

---

#### ⚠ WARNING



**Accidental starting.**  
**Can cause severe injury or death.**

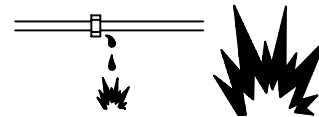
Disconnect the battery cables before working on the generator set. Remove the negative (-) lead first when disconnecting the battery. Reconnect the negative (-) lead last when reconnecting the battery.

---

**Disabling the generator set. Accidental starting can cause severe injury or death.** Before working on the generator set or connected equipment, disable the generator set as follows: (1) Move the generator set master switch to the OFF position. (2) Disconnect the power to the battery charger. (3) Remove the battery cables, negative (-) lead first. Reconnect the negative (-) lead last when reconnecting the battery. Follow these precautions to prevent starting of the generator set by an automatic transfer switch, remote start/stop switch, or engine start command from a remote computer.

---

#### ⚠ WARNING



**Explosive fuel vapors.**  
**Can cause severe injury or death.**

Use extreme care when handling, storing, and using fuels.

---

⚠ WARNING
<p><b>Explosion.</b> <b>Gasoline vapors can cause explosion and severe injury or death.</b></p> <p>Before starting the generator set, operate the blower 4 minutes and check the engine compartment for gasoline vapors.</p>



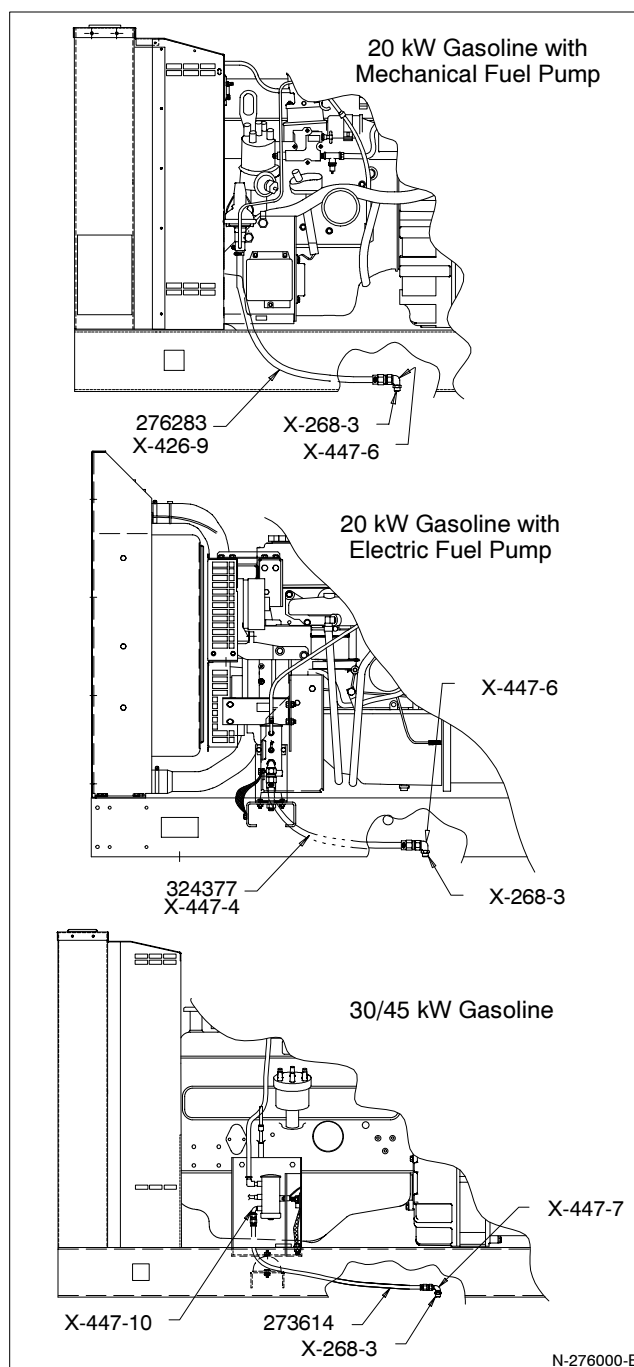
**The fuel system. Explosive fuel vapors can cause severe injury or death.** Vaporized fuels are highly explosive. Use extreme care when handling and storing fuels. Store fuels in a well-ventilated area away from spark-producing equipment and out of the reach of children. Never add fuel to the tank while the engine is running because spilled fuel may ignite on contact with hot parts or from sparks. Do not smoke or permit flames or sparks to occur near sources of spilled fuel or fuel vapors. Keep the fuel lines and connections tight and in good condition. Do not replace flexible fuel lines with rigid lines. Use flexible sections to avoid fuel line breakage caused by vibration. Do not operate the generator set in the presence of fuel leaks, fuel accumulation, or sparks. Repair fuel systems before resuming generator set operation.

**Explosive fuel vapors can cause severe injury or death.** Take additional precautions when using the following fuels:

**Gasoline**—Store gasoline only in approved red containers clearly marked GASOLINE.

## Installation Procedure

1. Place the generator set master switch in the OFF position.
2. Disconnect the power to the battery charger, if equipped.
3. Disconnect the generator set engine starting battery(ies), negative (-) lead first.
4. Refer to Figure 1 for installation of the flexible fuel line kit. Apply pipe sealant to all threaded connections. Refer to Parts List for component descriptions.
5. Check that the generator set master switch is in the OFF position.
6. Reconnect the generator set engine starting battery, negative (-) lead last.
7. Reconnect power to the battery charger, if equipped.
8. Start generator set and observe fuel line connections for leaks.
9. Stop generator set and tighten fuel lines as required.



**Figure 1** Generator Set Flexible Fuel Line Connections

## Parts List

### Flexible Fuel Line Kits

Kits: PA-276284, PA-276284-SD, PA-276285, PA-276285-SD, PA-326786, PA-326786-SD					
Qty.	Description	Common Parts	Unique Parts		
			PA-276284, PA-276284-SD	PA-276285, PA-276285-SD	PA-276286, PA-276286-SD
1	Cap, pipe	X-268-3			
1	Connector, 7/16-20 x 1/8			X-296-1	
1	Clamp, hose				
1	Elbow, 1/2-20 x 1/8		X-426-9		
1	Elbow, 1/2-20 x 1/4		X-447-6		X-447-4 X-447-6
1	Elbow, 7/16-20 x 1/4			X-447-7	
1	Elbow, 7/16-20 x 1/8			X-447-10	
1	Line, flexible fuel		276283	273614	324377