

INSTALLATION INSTRUCTIONS

Pedestal Mounting Kits

This kit is used on 30 through 800 amp. transfer switches and consists of a mounting bracket and the hardware required to attach the bracket to the mounting surface and to attach the transfer switch enclosure to the bracket. The

purpose of the kit is to provide a raised mounting surface for the transfer switch enclosure. The bracket height is either 6 or 23 inches, depending on the model.

Parts List

			Kit Numbers					
Qty.	Description	Common Parts	30-150 Amp. PA-297265	30-500 Amp. PA-297266	225-400 Amp. PA-297267	225-400 Amp. PA-297268	600-800 Amp. PA-297269	600-800 Amp. PA-297270
2	Bracket, mounting		297359-BLK	297256	297260-BLK	297259	297263-BLK	297262
6	Bolt, H.C. 5/15-18 x 3/4	X-125-3						
6	Nut, whiz	X-6210-7						
12	Washer, plain	X-25-85						

⚠ WARNING



**Hazardous voltage.
Can cause severe injury or death.**

Do not open enclosure until all power sources are disconnected.

(under 600 Volt)

Hazardous voltage can cause severe injury or death.

De-energize both normal and emergency power sources before proceeding. Move generator master switch on controller to OFF position and disconnect battery negative (–) before working on transfer switch! Turn the transfer switch selector switch to the OFF position.

NOTE

Leads entering the bottom of the enclosure need to be rerouted through the top or side of the enclosure. Refer to installation manual for connection of ATS.

⚠ DANGER



**Hazardous voltage.
Will cause severe injury or death.**

Do not open enclosure until all power sources are disconnected.

(600 Volt and above)

Installation

Mount the transfer switch enclosure to the bracket and attach the bracket to the floor using the following procedure:

1. De-energize normal and emergency power sources.

NOTE

Protect contactor and circuit boards from metal chips from drilling.

2. Drill 6 mounting holes in floor of enclosure according to amperage ratings specified on Figure 1. To simplify the hole drilling process, make a paper template of the existing hole pattern on the bracket; place this template on the floor of the enclosure.

3. Lift enclosure using suitable hoisting equipment, and slide mounting bracket under enclosure. Align drilled holes in enclosure floor with mounting holes in bracket.

4. Attach mounting bracket to underside of enclosure using 6 bolts, 6 nuts and 12 washers supplied in kit.

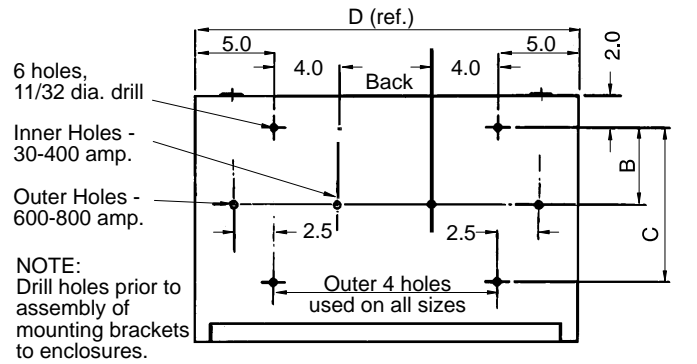
NOTE

Washers are to be placed under the bolt heads as well as under the nuts. See the inset on Figure 1.

5. Set the enclosure and bracket down on a level, even surface for permanent installation. If necessary, use shims (not supplied in kit) to level the bracket. The enclosure door may bind if mounting surface is not level.

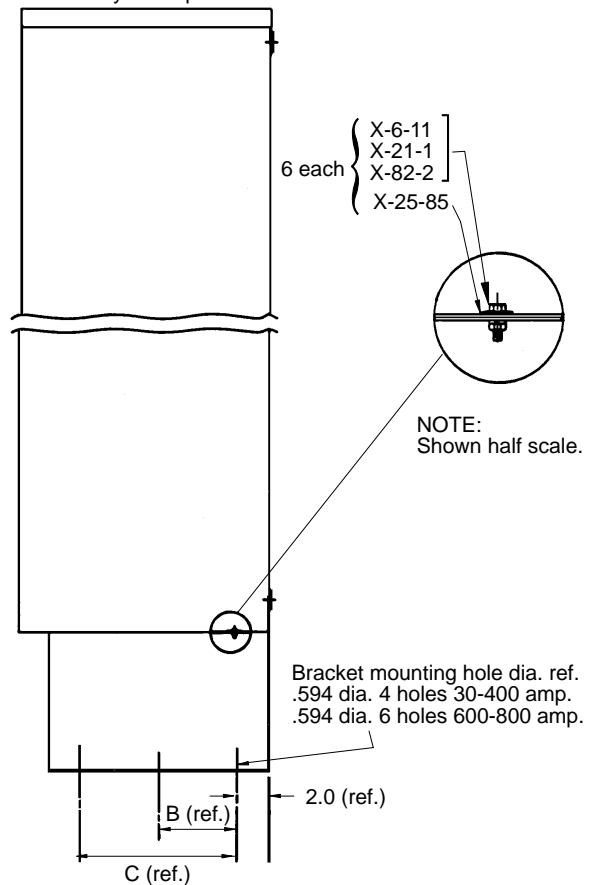
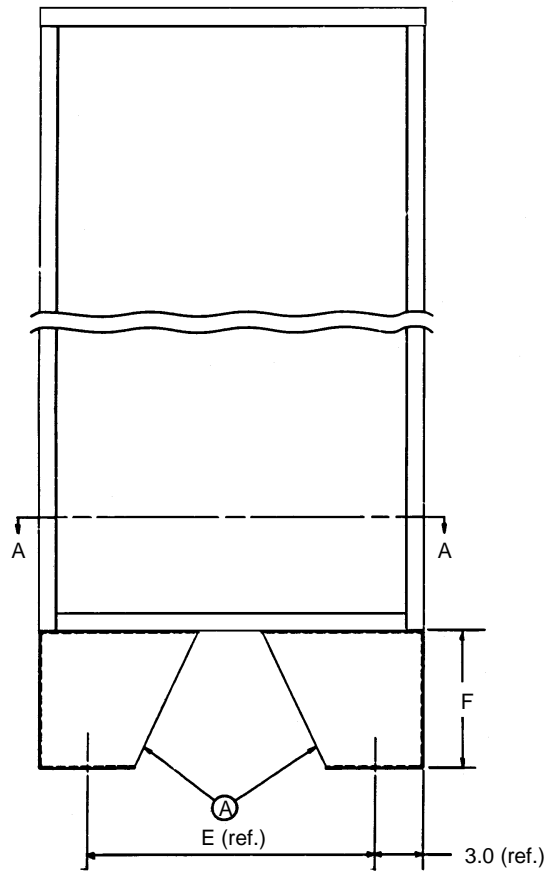
6. Re-energize normal and emergency power sources.

**VIEW A-A
(HOLE LOCATION/DRILLING INSTRUCTION)**



NOTE:
Dimensions are in inches, 1 in. equals 25.4 mm.

NOTE:
Mount on a level surface. Failure to do so may result in the door binding. In such a case shims may be required.



Kit No.	Description	Bracket Number	A	B	C	D (ref.)	E (ref.)	F
PA-297270	600-800 amp. NEMA 3R	297262		6.96	13.92	32.48	26.48	6.0
PA-297268	225-400 amp. NEMA 3R	297259		4.81	9.62	23.90	17.90	23.0
PA-297266	30-150 amp. NEMA 3R	297256		3.69	7.38	23.90	17.90	23.0
PA-297269	600-800 amp. Std.	297263 BLK		6.96	13.92	32.48	26.48	6.0
PA-297267	225-400 amp. Std.	297260 BLK		4.81	9.62	23.90	17.90	23.0
PA-297265	30-150 amp. Std.	297359 BLK		3.69	7.38	23.90	17.90	23.0

AK-295000

Figure 1. 30-800 Amp. Mounting Bracket Kits.