

INSTALLATION INSTRUCTIONS

Oil Drain Kits PA-274656 & PA-274656-SD 1500 kW Standby Generator Set

This kit allows the draining of the engine oil when placement of a drain pan beneath the engine is not possible or desirable. A manual drain valve is installed in place of the oil drain plug. A flexible hose connected to the valve and to a fitting on the skid rail allows the engine oil to be drained from the service side of the generator set.

It is recommended that the kit be installed during the next scheduled oil change.



WARNING

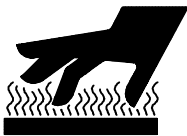
Accidental starting.

Can cause severe injury or death.

Disconnect battery cables before working on generator set (negative lead first and reconnect it last).

Accidental starting can cause severe injury or death. Turn generator master switch to OFF position, disconnect power to battery charger, and remove battery cables (remove negative lead first and reconnect it last) to disable generator set before working on any equipment connected to generator. The generator set can be started by automatic transfer switch or remote start/stop switch unless these precautions are followed.

WARNING



Hot engine and exhaust system.

Can cause severe injury or death.

Do not work on generator set until unit is allowed to cool.

Hot parts can cause severe injury or death. Do not touch hot engine parts. An engine gets hot while running and exhaust system components get extremely hot.

INSTALLATION

NOTE

Installation procedure for front and rear engine oil pans is identical.

1. Turn generator master switch to OFF position.
2. Disconnect battery, negative lead first.
3. Allow engine to cool. Remove drain plug and drain engine oil into suitable container.

NOTE

Dispose of used engine oil in an environmentally safe manner. Take used engine oil to a suitable collection facility in your area. **DO NOT POUR USED OIL ON THE GROUND, DOWN SEWERS, OR INTO STREAMS OR OTHER BODIES OF WATER.**

4. Install 1/2-in. NPT elbow (X-211-1) in place of drain plug (see Figure 1).

NOTE

Use thread sealant on all threaded connections to prevent leakage.

5. Install oil drain valve (272701) on elbow.
6. Connect 25-in. (635 mm) hose (X-577-34) to front pan and 30-in. (762 mm) hose (X-577-35) to rear pan. Secure hoses to drain valves with hose clamps (X-426-8). Locate clamp 1/4 inch (6.3 mm) from hose end and tighten clamp.

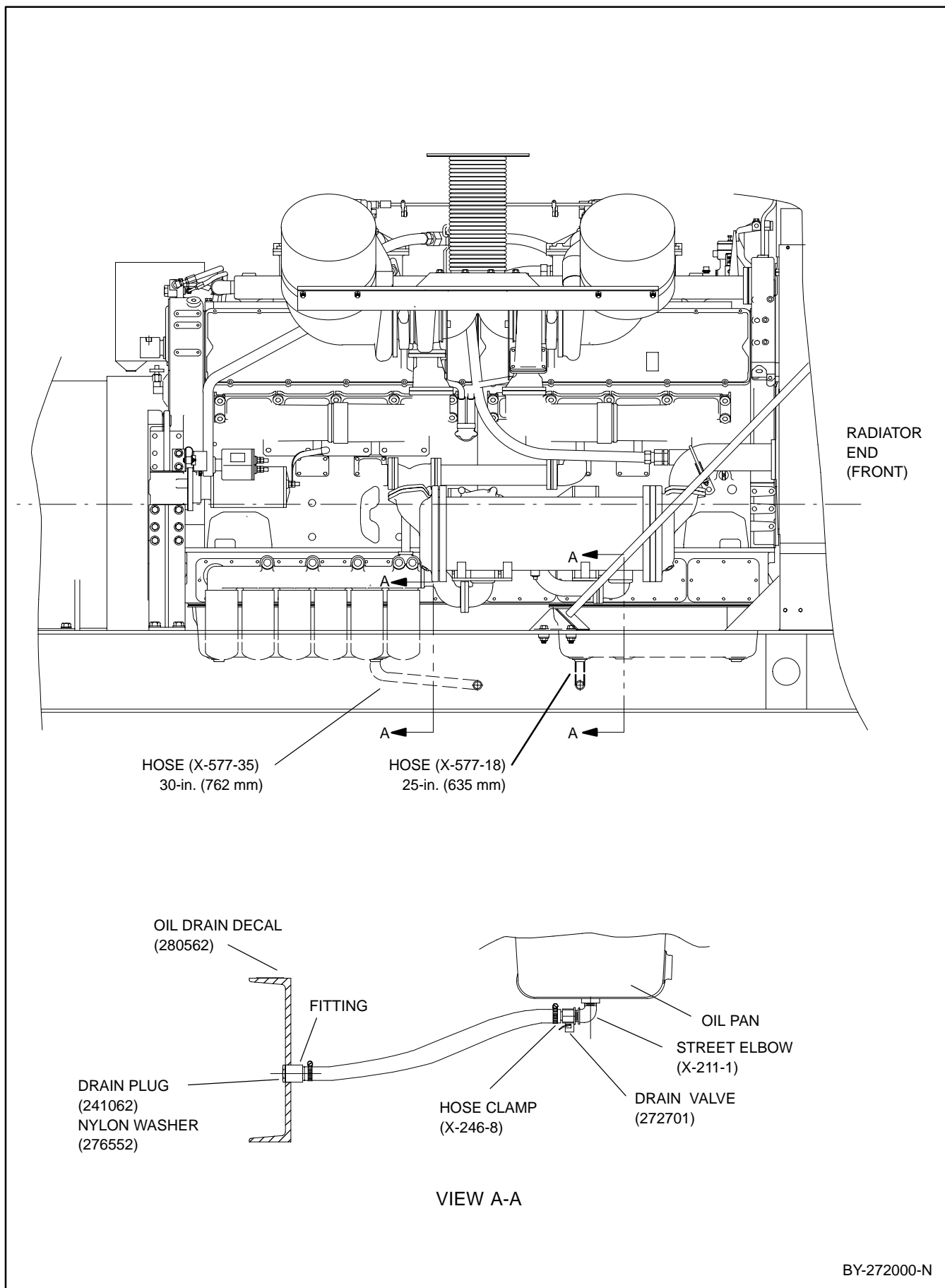


Figure 1. Oil Drain Kit

7. Connect hose to existing fitting in skid rail and secure with hose clamp (X-426-8).
8. Place nylon washer (276552) on drain plug (241062) and install in skid rail fitting.
9. With surfaces clean and dry, apply oil drain decals (280562) to skid rail.
10. Verify that oil drain valve is closed and the drain plug is tight. Fill engine with proper grade oil (see generator operators manual for proper specification).
11. Reconnect battery cables, negative lead last. Run generator and check for leaks. STOP generator set.
12. Wipe up any spilled oil with rags. Dispose of rags in a proper container.

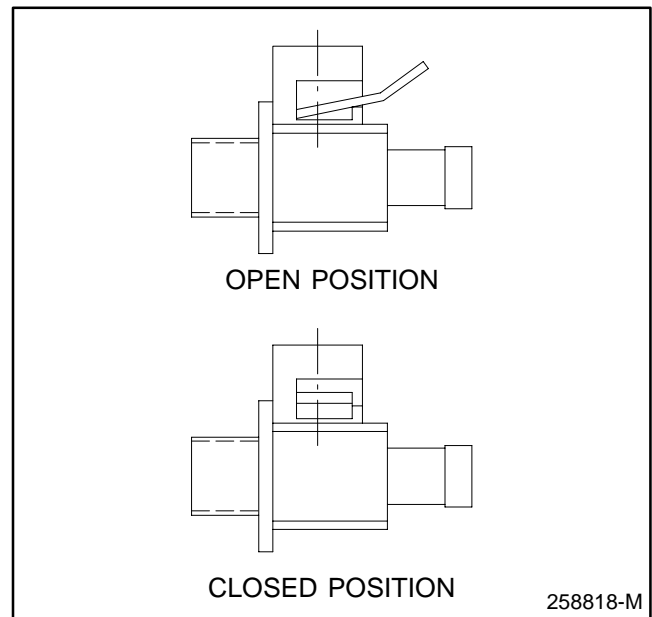


Figure 2. Drain Valve Operation

DRAIN VALVE OPERATION

To open drain valve, lift tab to clear detent position and rotate 90° counterclockwise (see Figure 2) Return tab to closed position before adding engine oil.

Parts List		
Kits PA-274656 & PA-274656-SD		
Qty.	Description	Part Number
2	Elbow, street, 1/2 in. NPT	X-211-1
4	Clamp, hose, 0.81 to 1.75 in. x 0.56 in.	X-426-8
1	Hose, 0.625 in. ID x 25 in.	X-577-18
1	Hose, 0.625 in. ID x 30 in.	X-577-35
2	Plug, drain	241062
2	Valve, oil drain	272701
2	Washer, nylon	276552
2	Decal, oil drain	280562