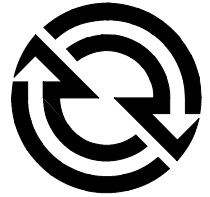


Wiring Diagrams

SPECTRUM®

DETROIT DIESEL



Generator Sets

Models:

200-300DS (Detroit Diesel Powered)

Controllers:

Microprocessor-Plus

Microprocessor

Engine Gauge Box for Paralleling (Switchgear)



Introduction

This manual contains the wiring diagrams for the 200-300DS Detroit Diesel-powered models equipped with one of the following controllers:

Microprocessor-Plus

16-Light

7-Light

Microprocessor

16-Light

6-Light

Engine Gauge Box for Paralleling (Switchgear)

Use the wiring diagram cross-reference to determine the correct wiring diagrams.

All information in this publication represents data available at time of print. The manufacturer of Spectrum® reserves the right to change this literature and the products represented without incurring obligation.

Service Assistance

For sales and service in the U.S.A. and Canada check the yellow pages of the telephone directory under the heading GENERATORS— ELECTRIC for an authorized service distributor/dealer.

For sales and service outside the U.S.A. and Canada, contact your local distributor.

For further information or questions, contact the company directly at:

Spectrum

N7650 County Trunk LS

Sheboygan, Wisconsin 53083 U.S.A.

Phone: 920-459-1877

Fax: 920-459-1825 (U.S.A. Sales)

920-459-1614 (International)

To ensure supply of correct parts or information, make note of the following identification numbers in the spaces provided:

GENERATOR SET

MODEL, SPEC, and SERIAL numbers are found on the nameplate attached to the generator set.

Model No. _____

Specification No. _____

Serial No. _____

GENERATOR SET ACCESSORIES

An alternate nameplate inside the junction box identifies factory-installed generator set accessories.

Accessory Nos. _____

ENGINE

The engine serial number is found on the engine nameplate.

Engine Serial No. _____

Wiring Diagrams

At the time of print, this manual applied to the model numbers and specification (spec) numbers following. On occasion this manual may be applicable to specs not listed below, such as when similar new specs are created prior to the updated reprint or in cases where the manual is deemed an acceptable substitute for a manual under development.

Use the Wiring Diagram Cross-Reference to determine the correct version number for a given model number and spec number. Find that version number in the Controller Wiring Diagrams Reference and locate the wiring diagrams corresponding to the generator set's controller type. Wiring diagram pages are in numerical sequence by the numeric part of the alphanumeric part number.

Wiring Diagram Cross-Reference

Model No.	Spec. No.	Wiring Diagram Version No.
200DS	191001-191004 191096-	1 (2, 3)*
230DS	191005-191008 191102-	1 (2, 3)*
250DS	191009-191012 191108-	1 (2, 3)*
275DS	191013-191016 191114-	1 (2, 3)*
300DS	191017-191019 191120-	1 (2, 3)*

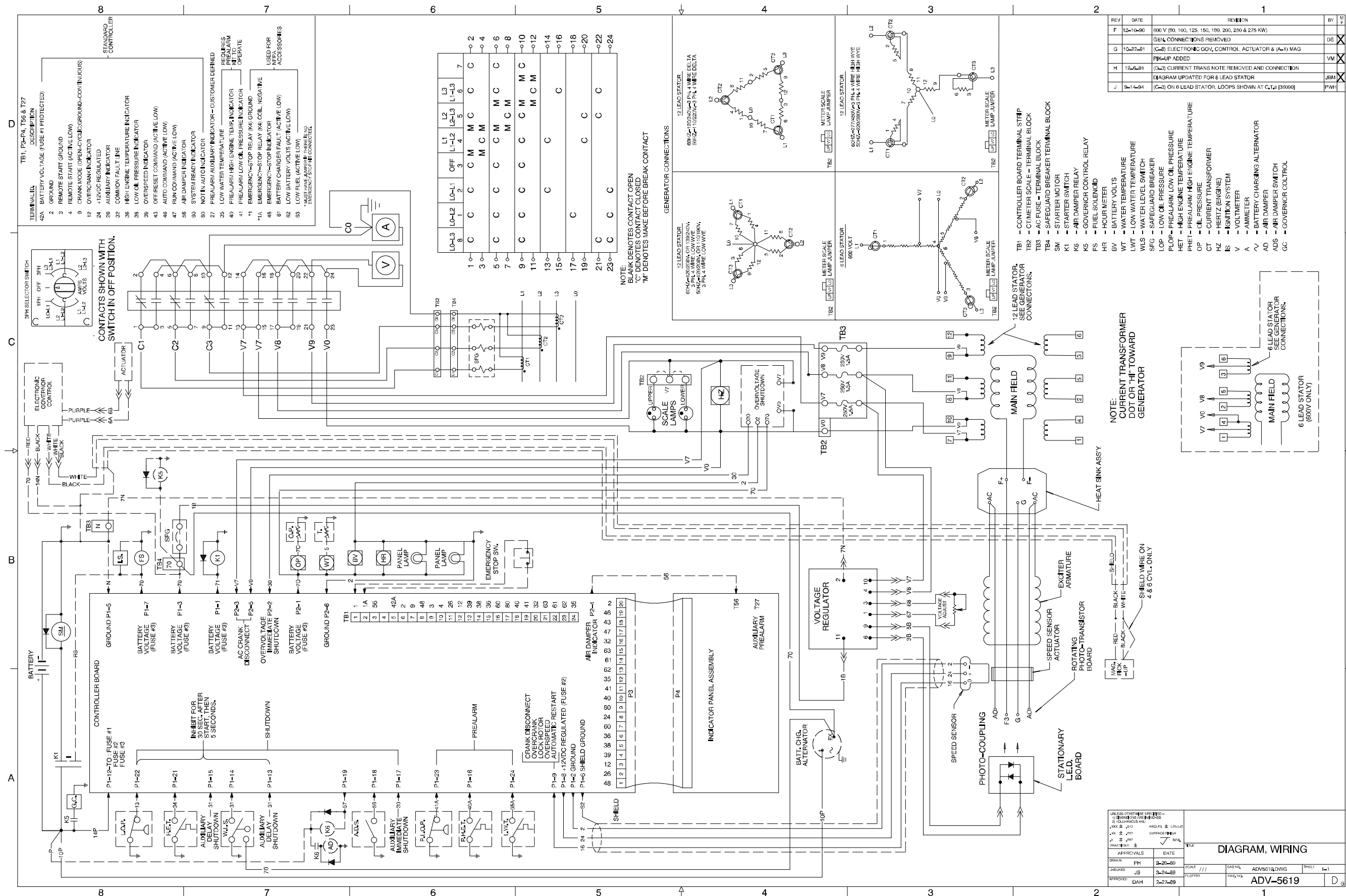
* Use version 2 for serial no. below 363369
Use version 3 for serial no. 363369 and above

Controller Wiring Diagrams Reference

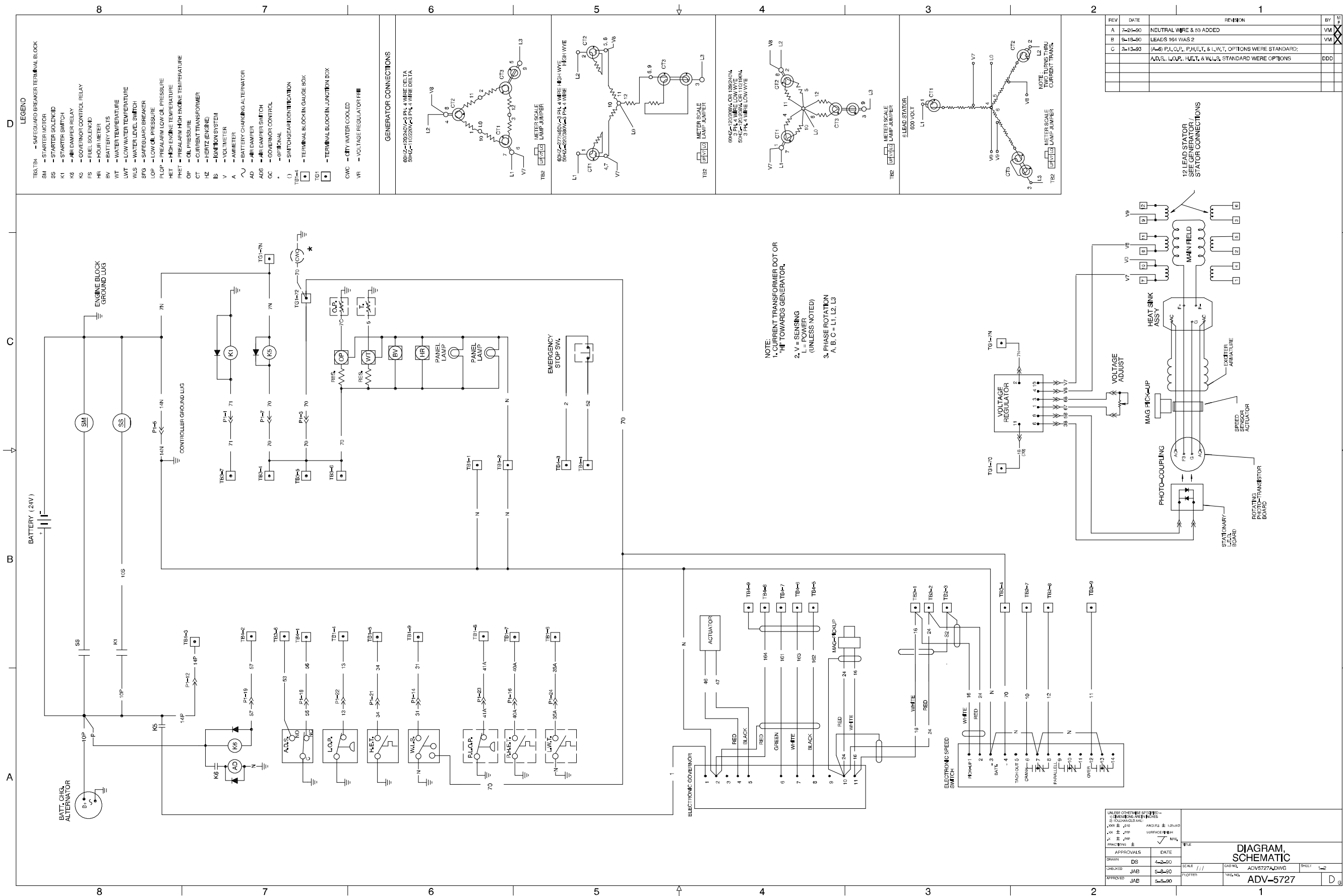
Controller Description (200-300DS)	Version 1	Pg	Version 2	Pg	Version 3	Pg
Microprocessor-Plus and Microprocessor Controllers						
Point-to-Point Wiring Diagram						
Standard	274248-G	15	325348-	16	325949-A	18
Oversize	273854-E	14	325349-	17	325950-A	19
Schematic Diagram						
1ph/3ph	ADV-5618-E	1	ADV-5618-E	1	ADV-6002-A	3
3ph/600V	ADV-5619-J	2	ADV-5619-J	2	ADV-6004-A	4
Microprocessor Controller Accessory Connections						
Accessories	255828A-M	7	255828A-M	7	328912A-B	20
Remote Annunciator Kit						
10-Relay	255828B-L	8	255828B-L	8	-	
14-Relay	255828C-C	9	255828C-C	9	328912B-A	21
Engine Gauge Box for Paralleling Controller (Switchgear)						
Point-to-Point Wiring Diagram						
Sheet 1	261151A-H	10	261151A-H	10	261151A-H	10
Sheet 2	261151B-G	11	261151B-G	11	261151B-G	11
Sheet 3	261151C-G	12	261151C-G	12	261151C-G	12
Sheet 4	261151D-G	13	261151D-G	13	261151D-G	13
Schematic Diagram	ADV-5727A-C	5	ADV-5727A-C	5	ADV-5727A-C	5
Accessories	ADV-5727B-B	6	ADV-5727B-B	6	ADV-5727B-B	6

NOTE: Version 2 uses the Microprocessor controller.
Version 3 uses the Microprocessor-Plus controller.

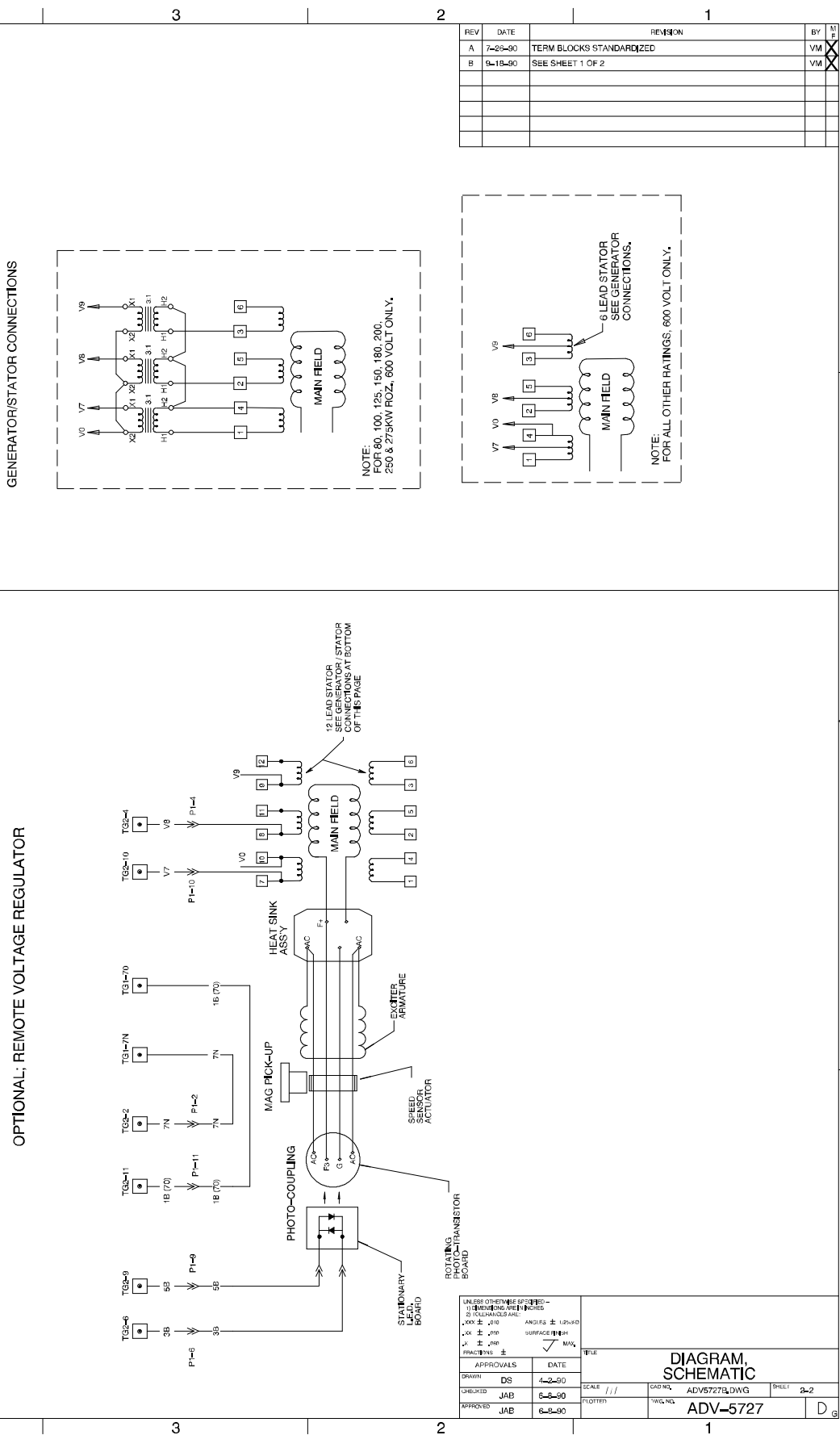
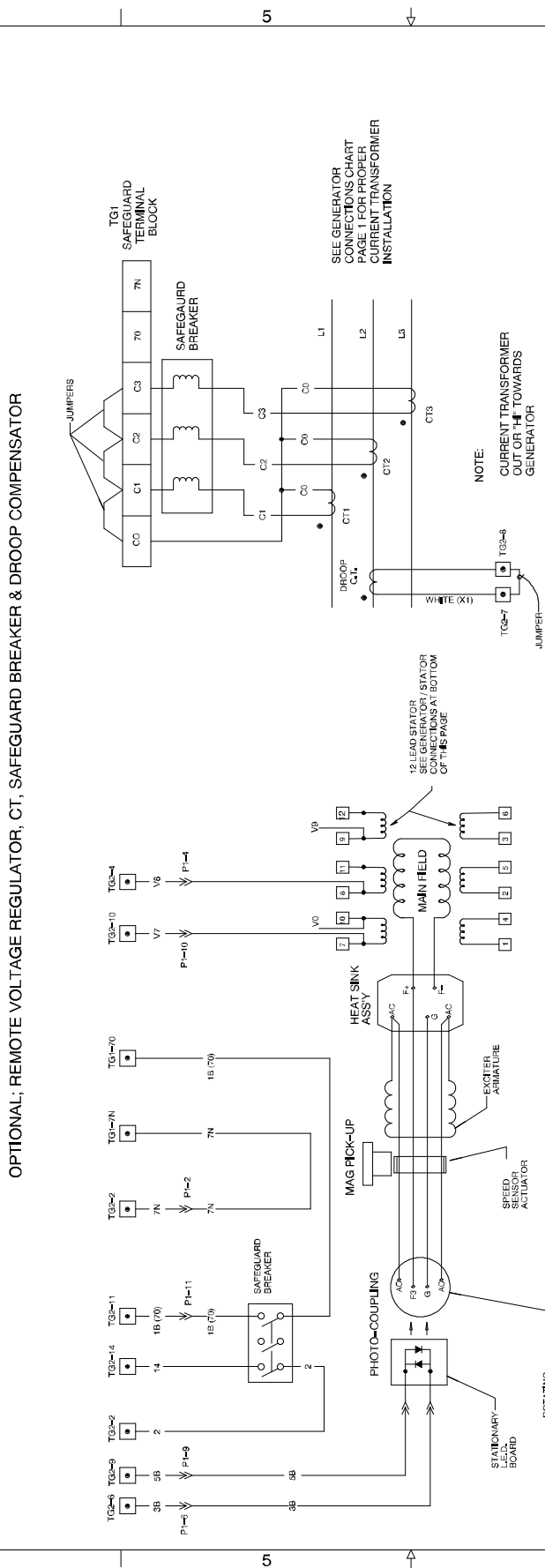
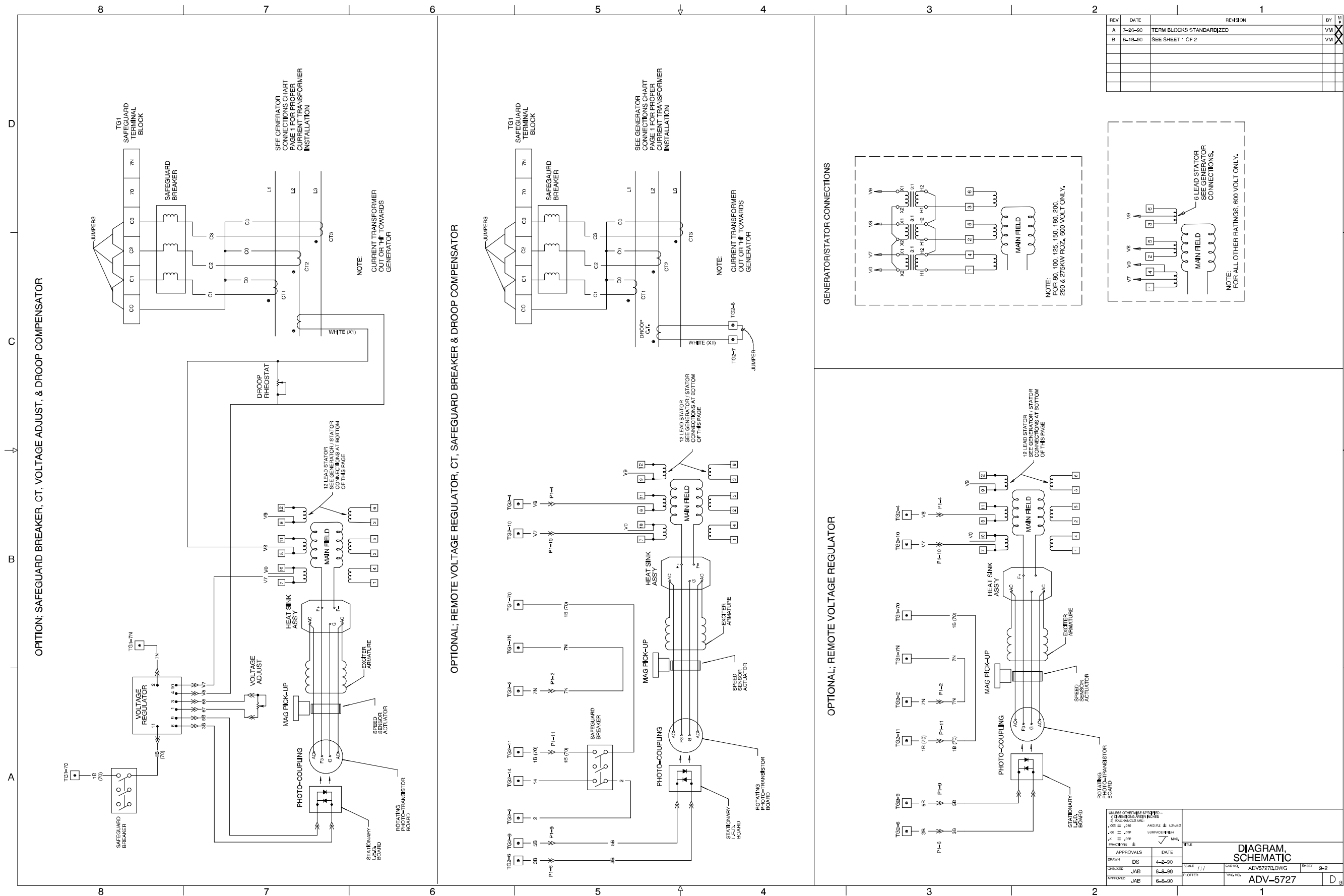


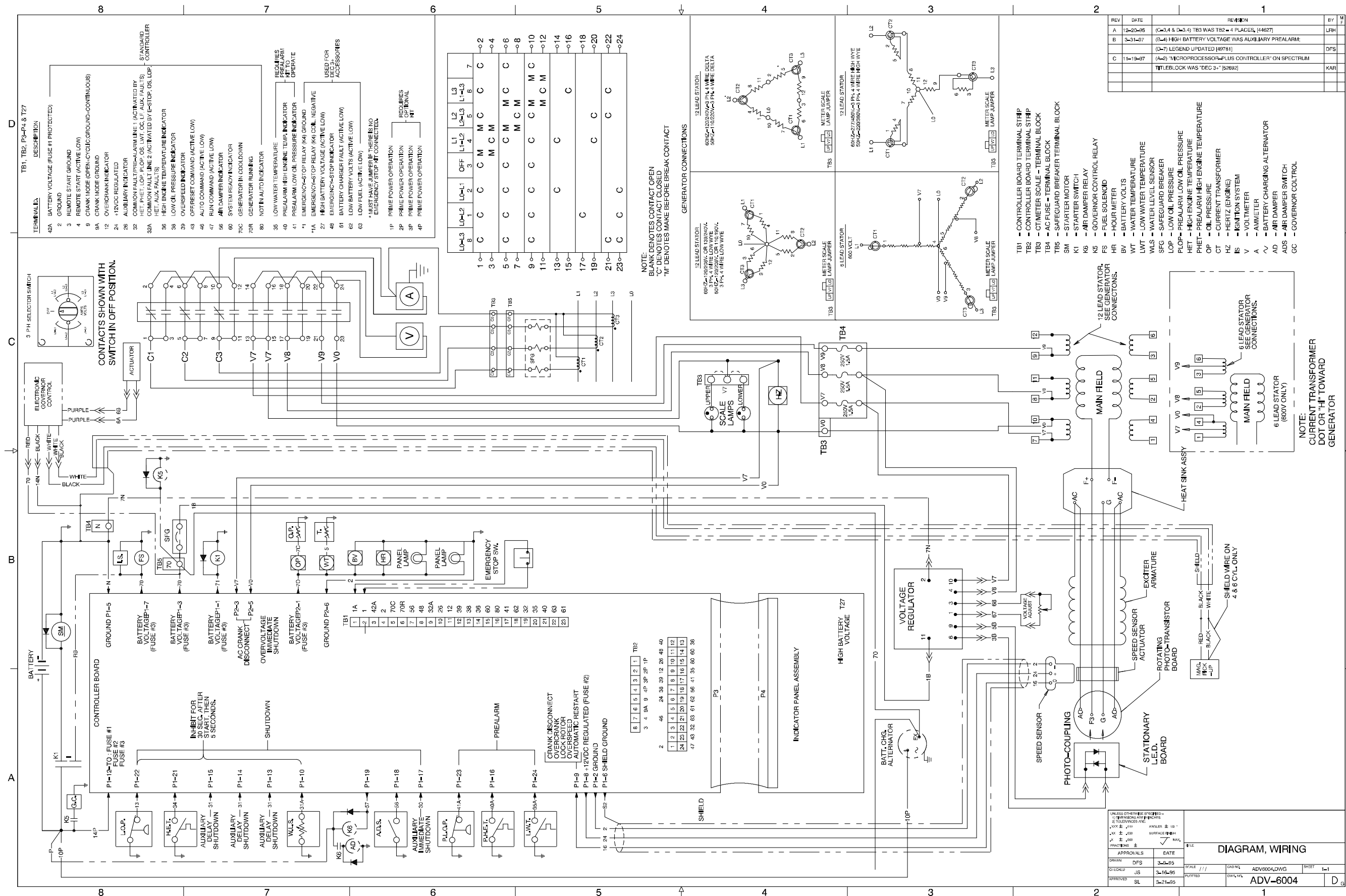


Microprocessor Controller, Schematic Diagram, 3 ph/600 V, ADV-5619-J

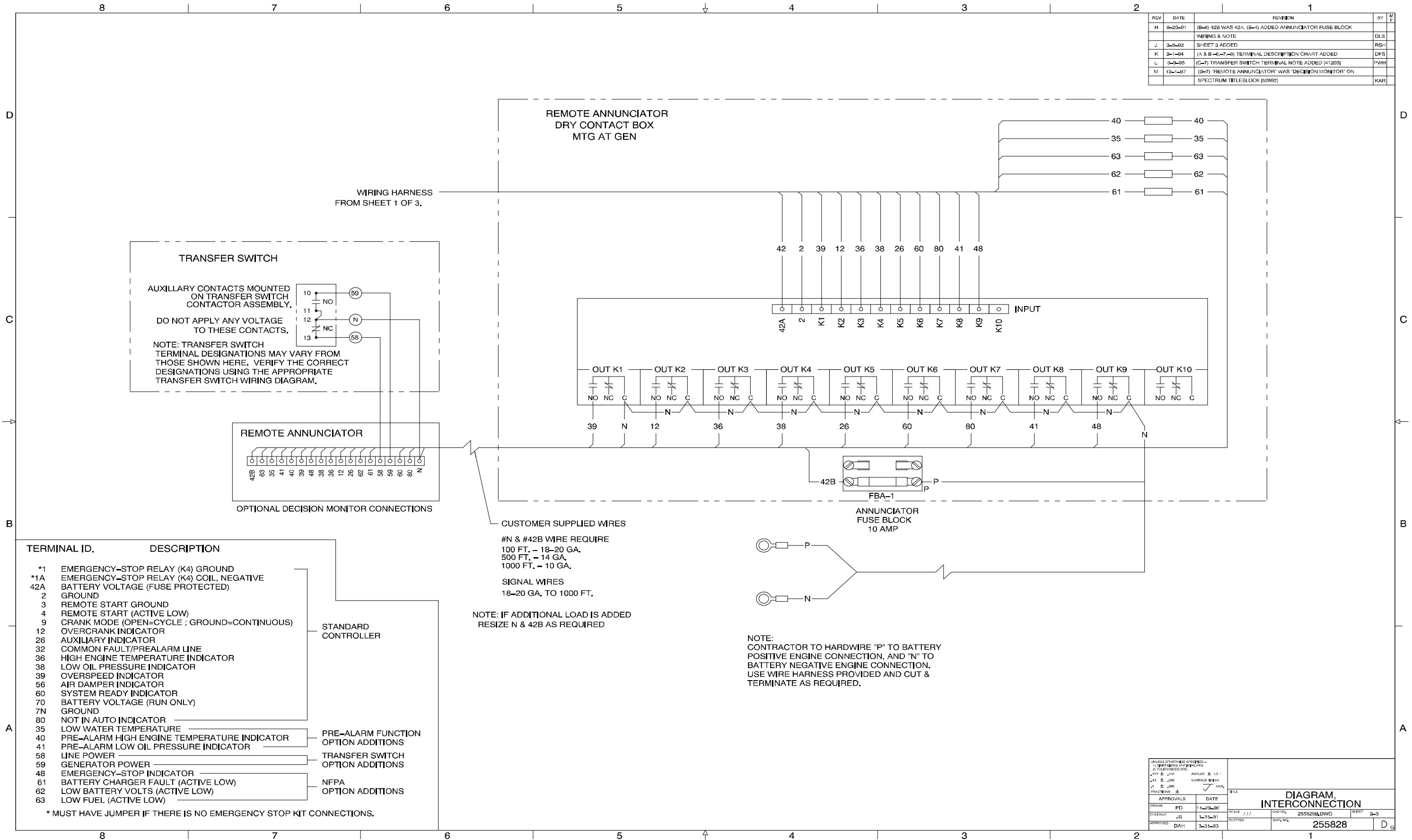


Engine Gauge Box for Paralleling Controller (Switchgear), Schematic Diagram, ADV-5727A-C

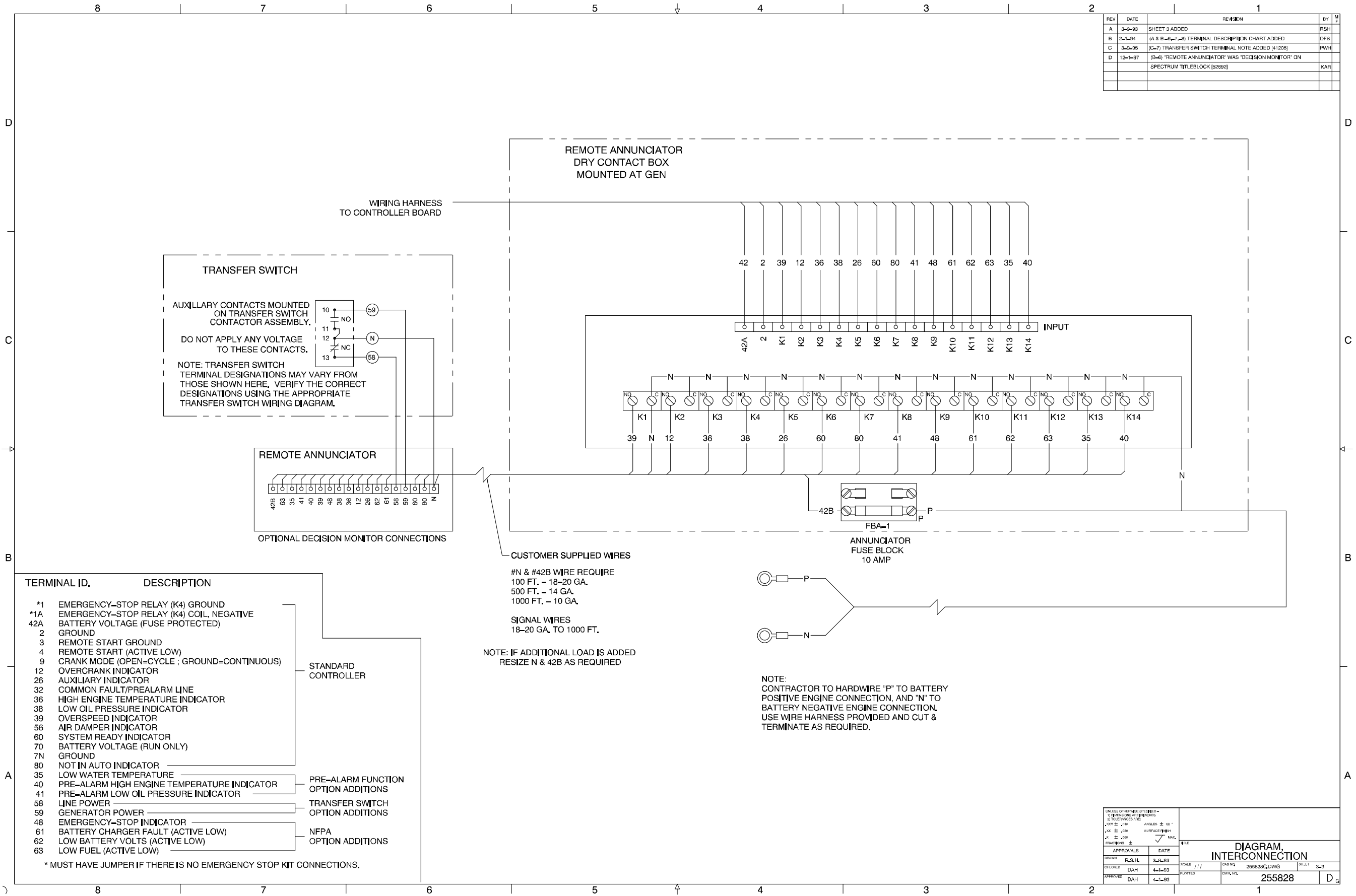




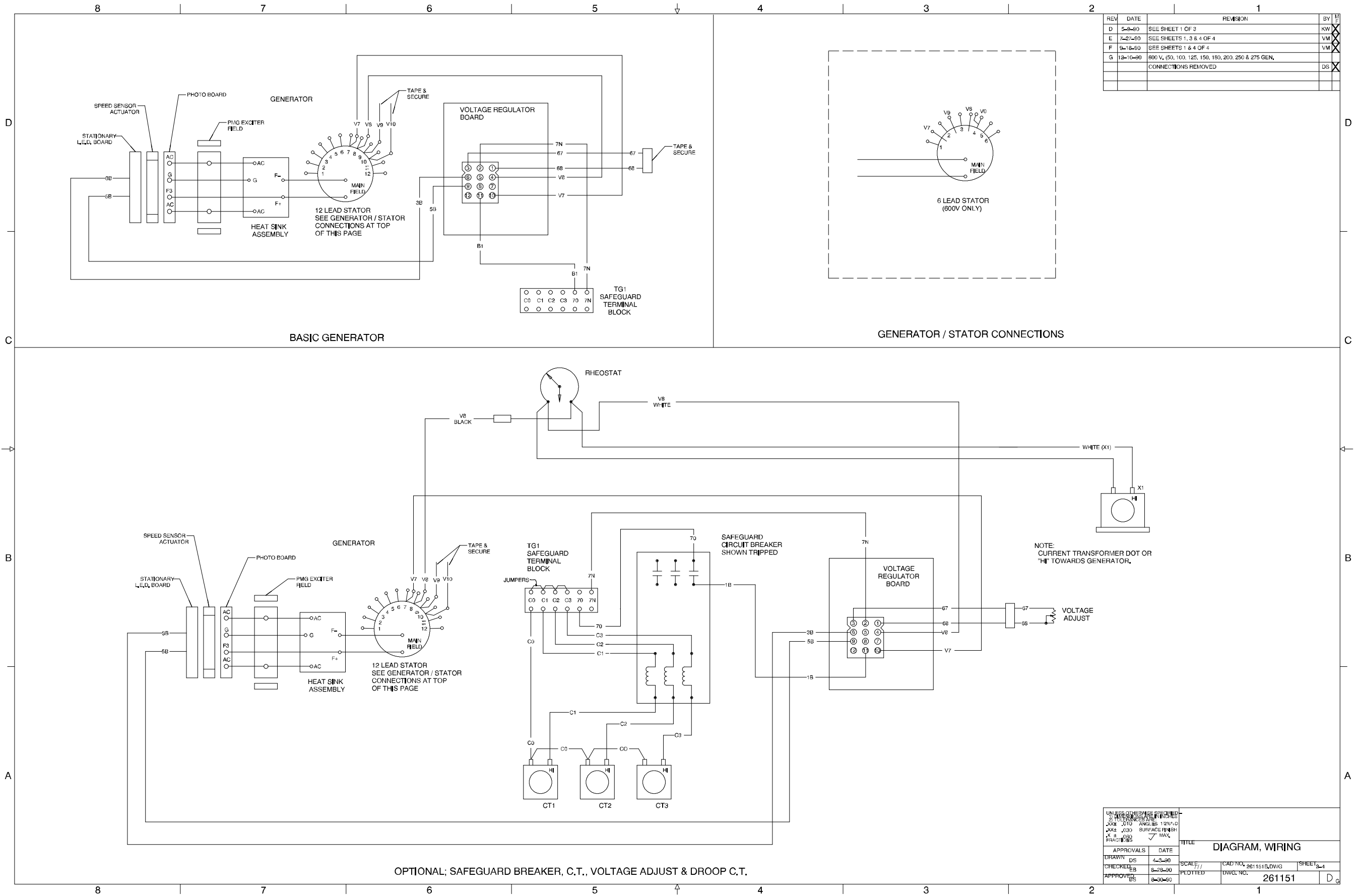
Microprocessor Controller, Schematic Diagram, 3 ph/600 V, ADV-6004-C



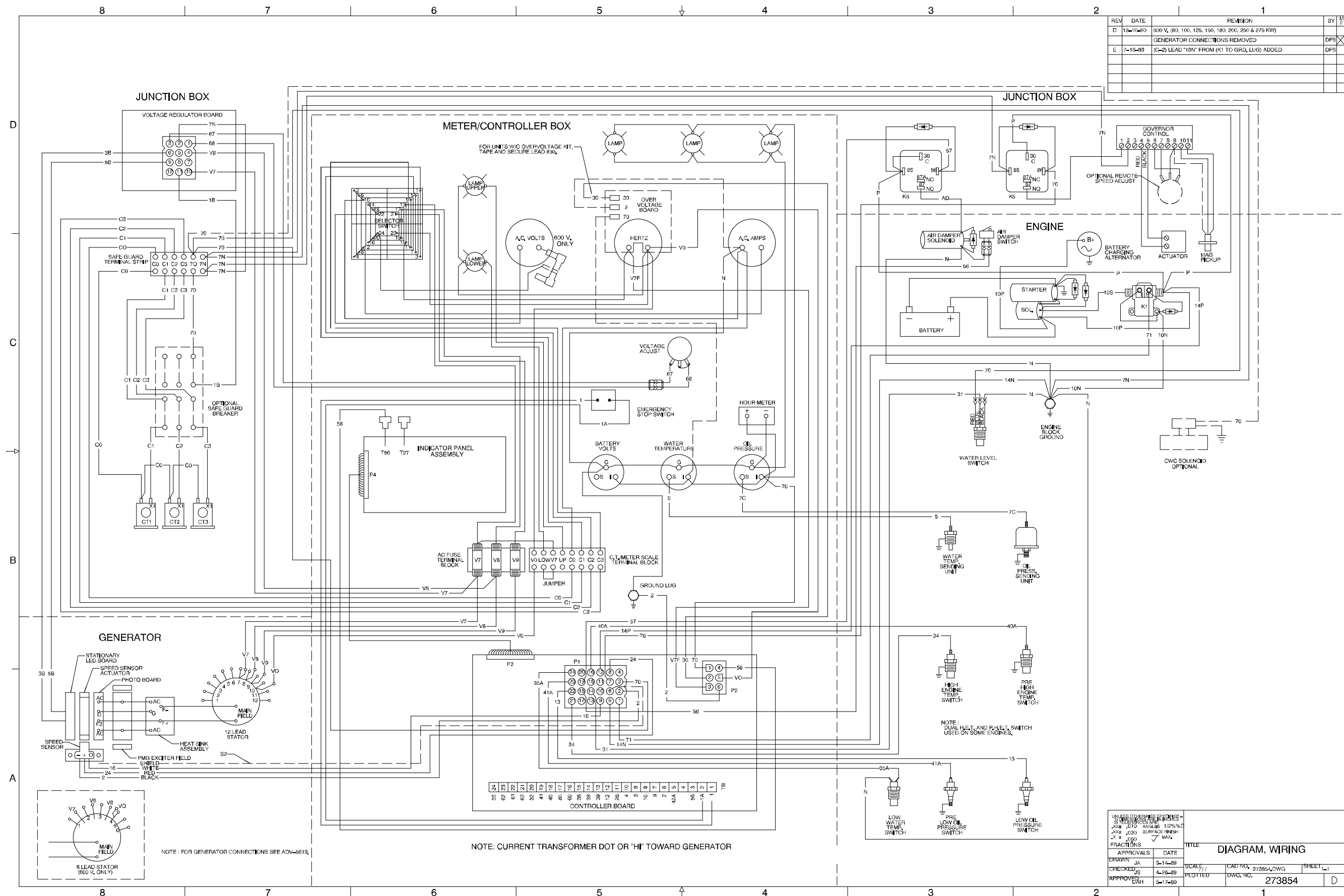
Microprocessor Controller, Remote Annunciator Kit, 10-Relay, 255828B-M



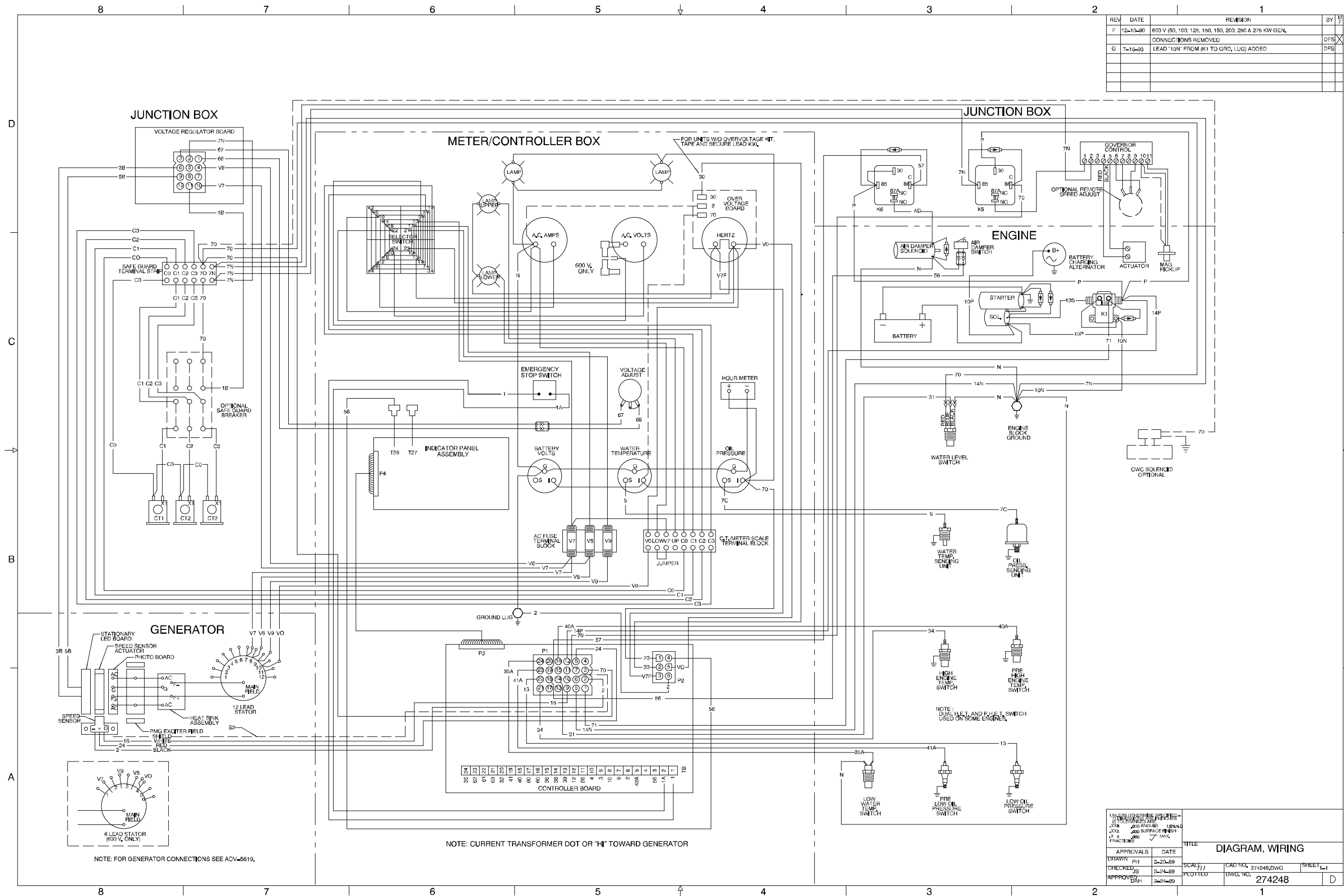
Microprocessor Controller, Remote Annunciator Kit, 14-Relay, 255828C-D



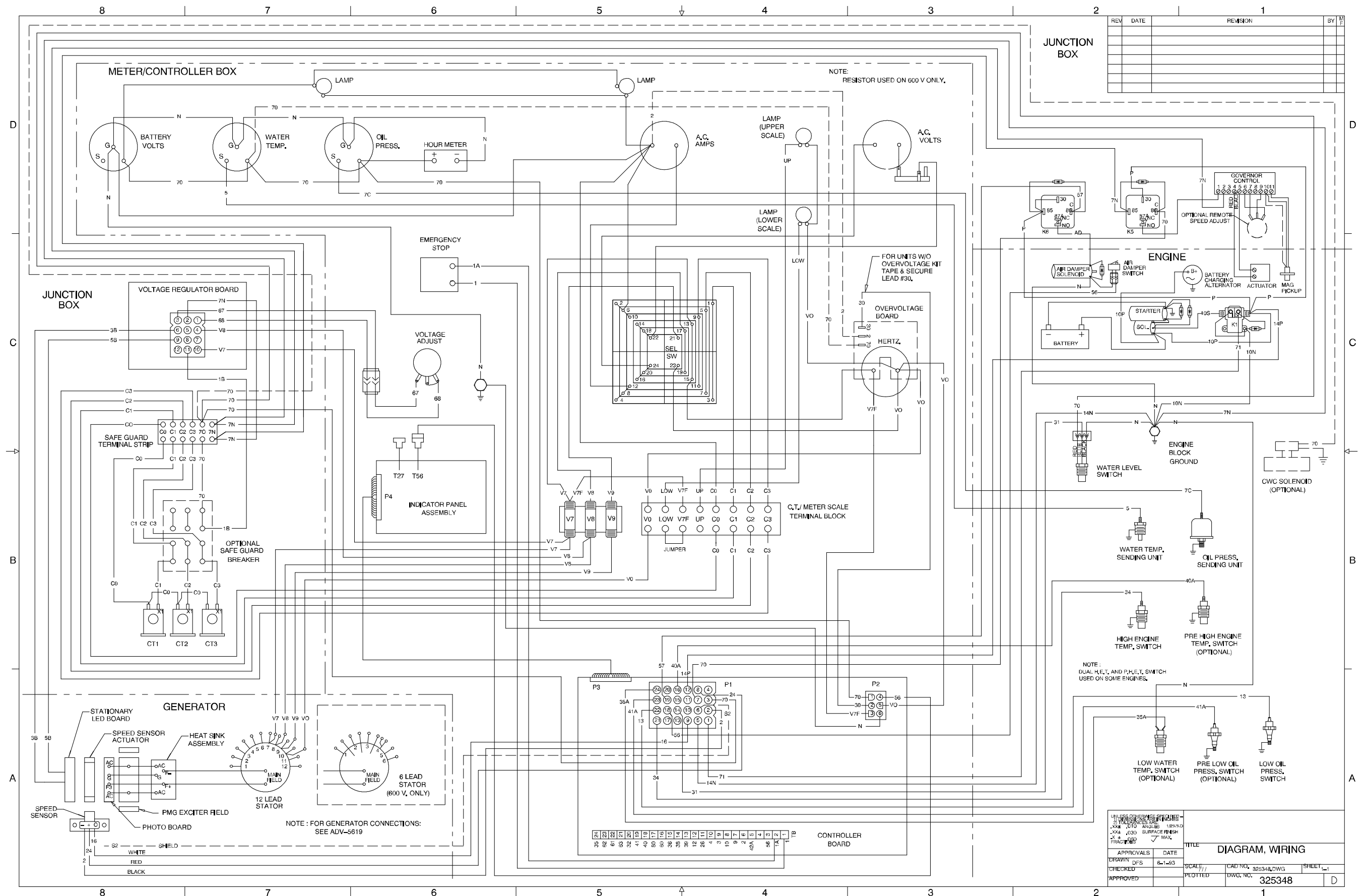
Engine Gauge Box for Paralleling Controller, Point-to-Point Wiring Diagram, Sheet 2, 261151B-G

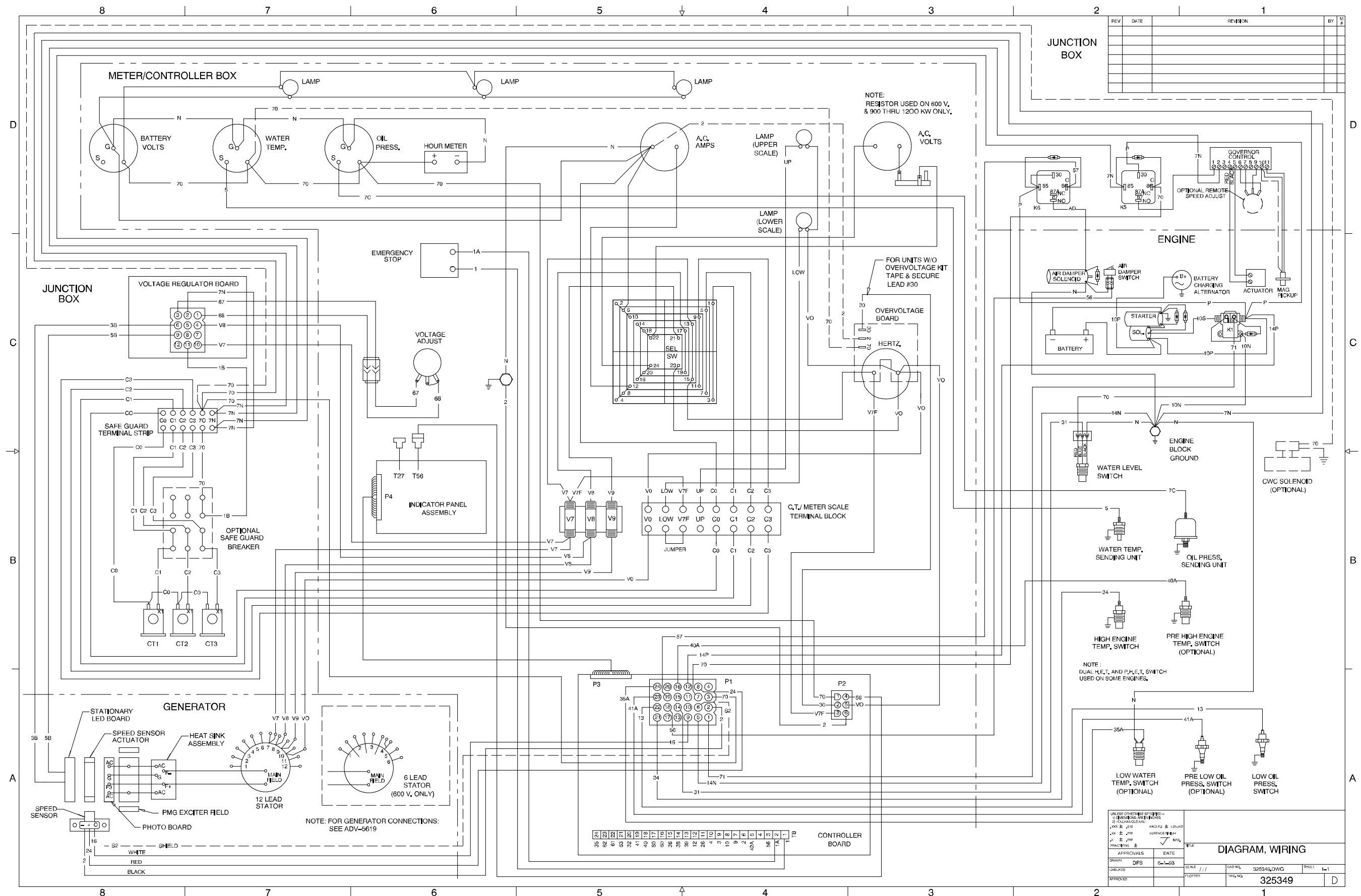


Microprocessor Controller, Point-to-Point Wiring Diagram, Oversize, 273854-E

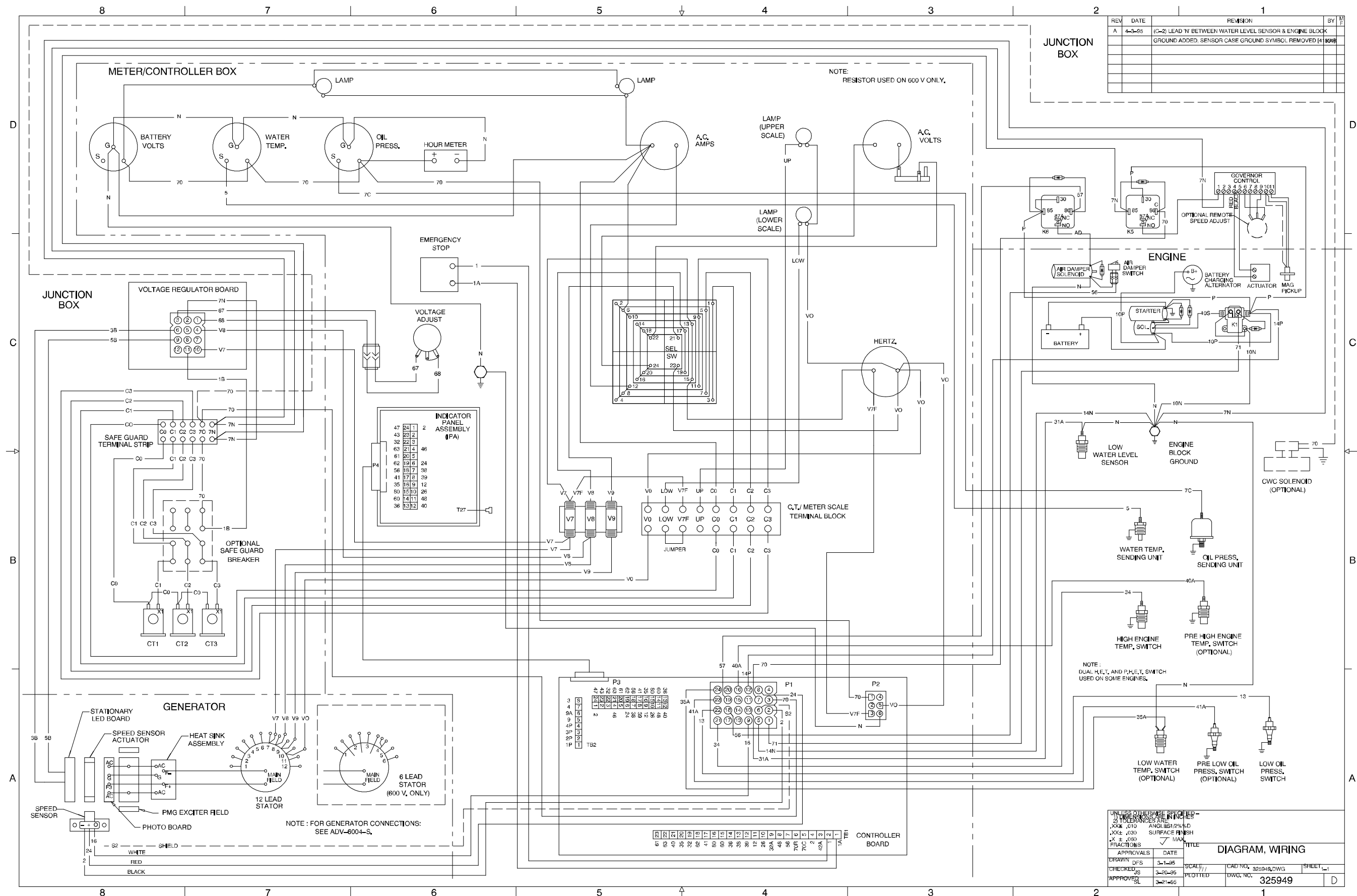


Microprocessor Controller, Point-to-Point Wiring Diagram, Standard, 274248-G

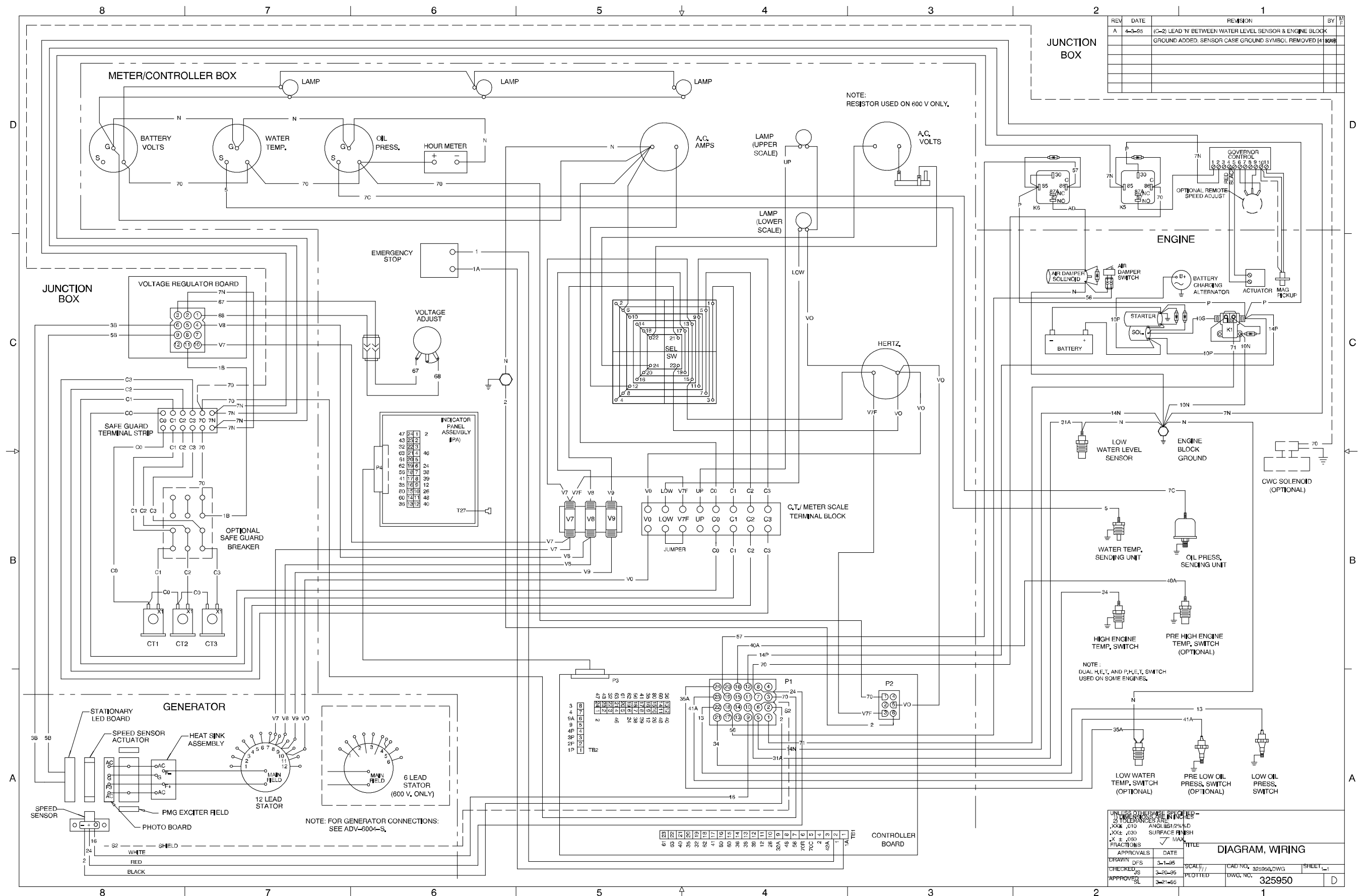




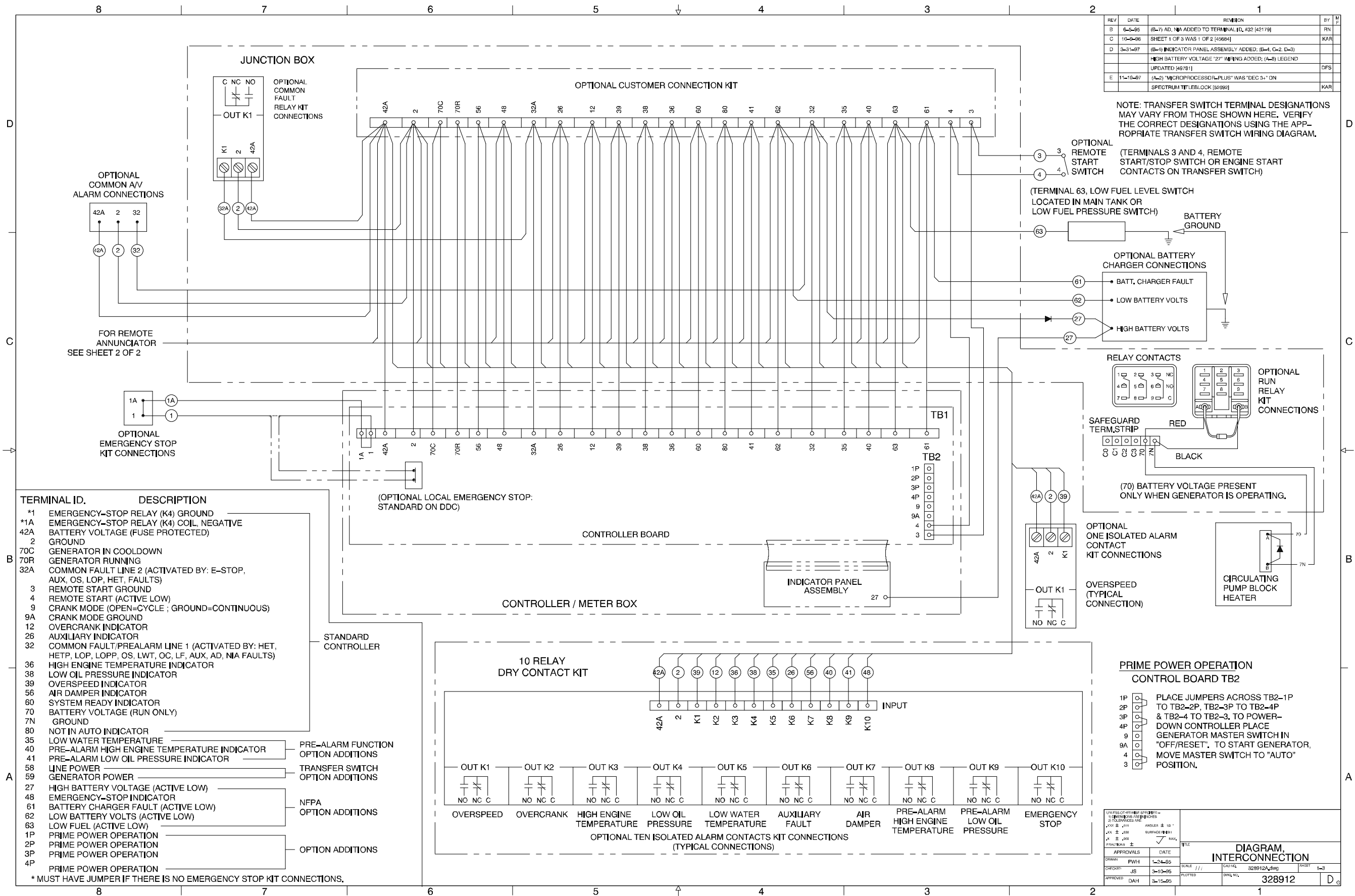
Microprocessor Controller, Point-to-Point Wiring Diagram, Oversize, 325349-



Microprocessor Controller, Point-to-Point Wiring Diagram, Standard, 325949-A



Microprocessor Controller, Point-to-Point Wiring Diagram, Oversize, 325950-A



Microprocessor Controller Accessory Connections, Accessories, 328912A-E

SPECTRUM[®]
DETROIT DIESEL



SPECTRUM, N7650 County Trunk LS, Sheboygan, Wisconsin 53083 U.S.A.
Phone 920-459-1877
Fax 920-459-1825 (U.S.A. Sales), Fax 920-459-1614 (International)

MP-5721 7/96c

© 1996. All rights reserved.