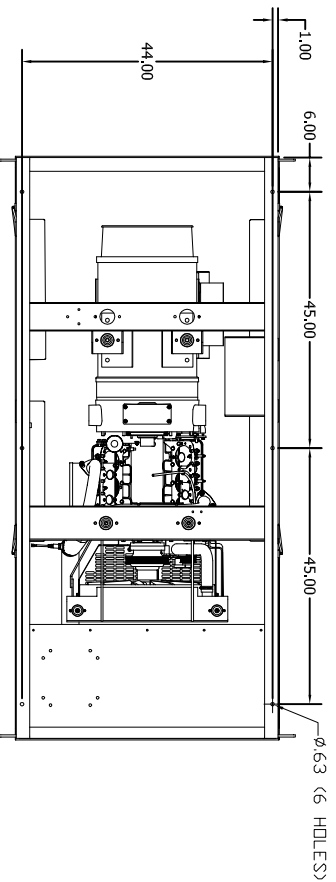
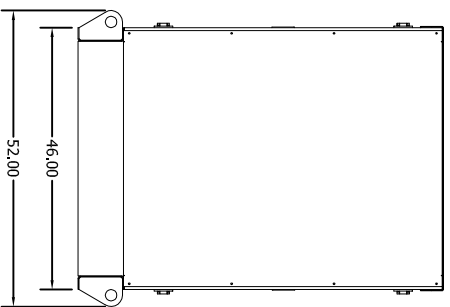
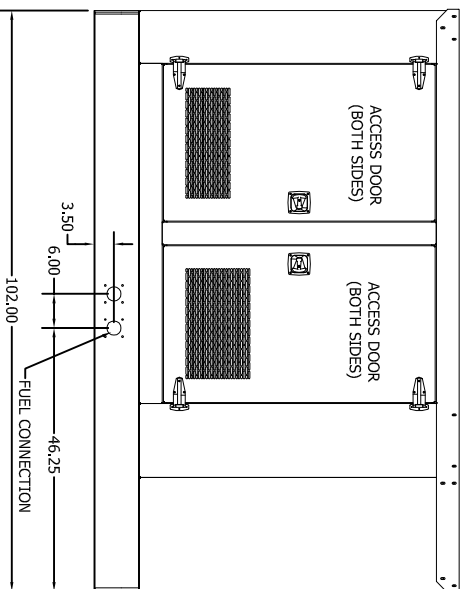
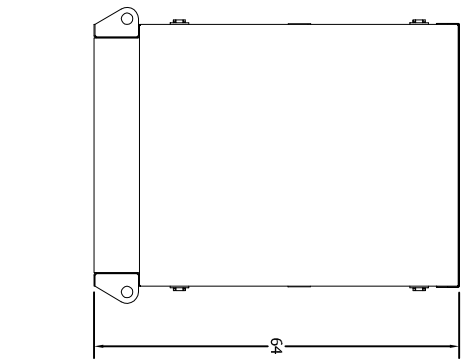


CUSTOMER APPROVAL SIGNATURE	APPROVAL DATE	COMMENTS	WEIGHT
INCLUDED FEATURES		PART #	
ENGINE: General Motors 4.3L V-6 (radiator through flywheel)		VABG43S2000	430 Lbs.
ALTERNATOR: MARATHON		361CSL1600	518 Lbs.
SUB-BASE: STRUCTURAL STEEL		V7087335	292 Lbs.
ISOLATORS: (4) LF2650		VTLF2650	12 Lbs.
STANDARD WEATHER HOUSING ENCLOSURE			713 Lbs.
SIDE-IN TOP-OUT VERTICAL MOUNT SILENCER		V162303	45 Lbs.
OIL DRAIN EXTENSION WITH VALVE ROUTED TO SKID		V7T204N	MISC.
(4) BATTERIES: GROUP 31 STYLE 12V BATTERY RACK AND CABLES FOR BATTERY Note: Rack is integral to the skid		V731P6	41 Lbs.
CONTROL PANEL			MISC.
CIRCUIT BREAKER: AMP ABB			MISC.
ABB ENCLOSURE			MISC.
WEIGHT SUBTOTAL			2,051 Lbs.
MISC. WEIGHT: 5% of subtotal			103 Lbs.
TOTAL WEIGHT:			2,154 Lbs.



ENCLOSURE MATERIAL: 12 & 14 ga. Galvaleneal
 COLOR: AkzoNobel Clay #20-8247HY POWDER COAT

DRAWN		6/13/2011		TITLE	
JOHN				TAYLOR POWER SYSTEMS	
CHECKED				SIZE	
QA				C	
MFG				DWG NO	
APPROVED				TG40 TO TG60 ENC	
				SCALE	
				SHEET 1 OF 1	
				REV	

TG40 Standard Enclosure