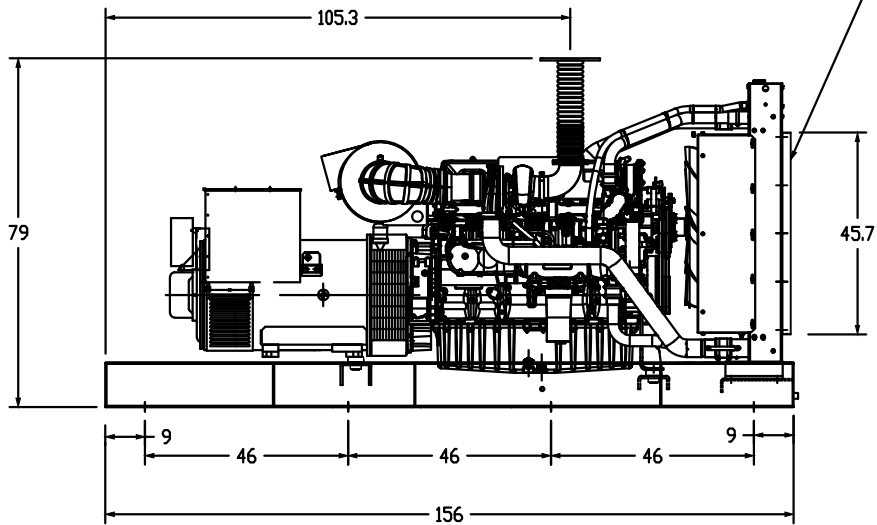
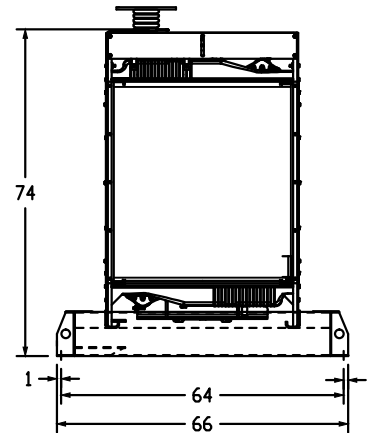


ELECTRICAL STUB UP AREA



DUCT FLANGE 45.75' X 43.375'



CUSTOMER APPROVAL SIGNATURE	APPROVAL DATE	COMMENTS	
INCLUDED FEATURES		PART #	WEIGHT
ENGINE: PERKINS 2506C-E15TAG4 Electropak (radiator through flywheel)		VAE15TAG4	3,770 Lbs.
ALTERNATOR: Marathon		572RSL4031	3,110 Lbs.
SUB-BASE: STRUCTURAL STEEL		VT087586	832 Lbs.
ISOLATORS: (2) LF31200 (2) LF42800		VTLF31200 VTLF42800	12 Lbs. 15 Lbs.
BLOCK HEATER 4000W 240V		VTCL1402102	MISC.
FLEX FUEL LINES:		VTGRU03218	MISC.
WIRE AND CABLE			MISC.
FLUIDS			MISC.
STAINLESS HARDWARE (BOLTS, HINGES, ETC.)			MISC.
(2) BATTERIES: 8D STYLE RACK AND CABLES FOR (2) BATTERIES Note: Rack is integral to the skid		VT8D	150 Lbs.
CONTROL PANEL: Digital Auto Start DGC2020			MISC.
WEIGHT SUBTOTAL			7,889 Lbs.
MISC. WEIGHT: 5% of subtotal			394 Lbs.
TOTAL WEIGHT:			8,283 Lbs.

DRAWN John	6/15/2011	TAYLOR POWER SYSTEMS	
CHECKED		TITLE	
QA		TD550 OPEN UNIT	
MFG			
APPROVED			
SIZE C	DWG NO	REV	
SCALE	TD550 OPEN UNIT		
		SHEET 1 OF 1	