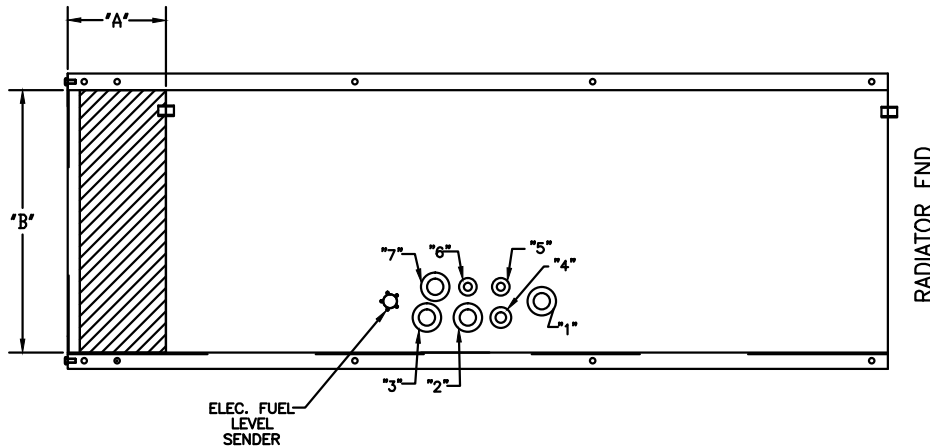
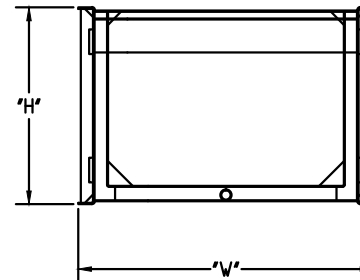
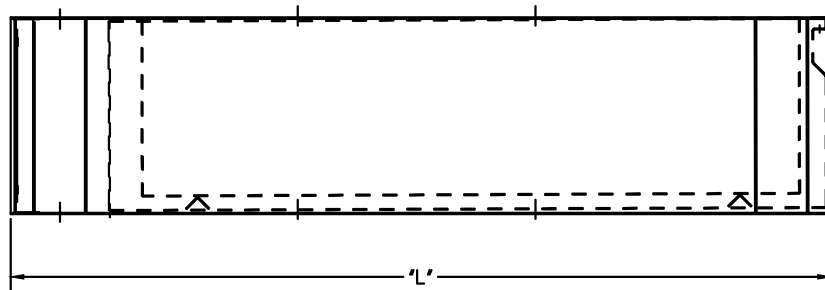


- "1" NPT EMERGENCY VENT
- "2" NPT FILL W/8" RISER AND LOCK CAP (SHIP LOOSE)
- "3" NPT LEVEL GAGE
- "4" NPT NORMAL VENT
- "5" NPT FUEL RETURN
- "6" NPT FUEL SUPPLY
- "7" NPT FOR OPTIONAL LOW LEVEL SWITCH

Model	PN#	Capacity Gallons	"L"	"W"	"H"	"A" Stub Area	"B" Stub Area	Weight Dry lbs.
TD800	VT1396300	850	300	96	13	N/A	N/A	N/A
	VT2196300	1650	300	96	21	N/A	N/A	N/A
	VT2996300	2450	300	96	29	N/A	N/A	N/A
	VT3696300	3250	300	96	36	N/A	N/A	N/A
TD1000	VT1496300	950	300	96	14	N/A	N/A	N/A
	VT2396300	1900	300	96	23	N/A	N/A	N/A
	VT3196300	2850	300	96	31	N/A	N/A	N/A
TD1250	VT4296300	3750	300	96	42	N/A	N/A	N/A
	VT14116320	1250	320	116	14	N/A	N/A	N/A
	VT23116320	2500	320	116	23	N/A	N/A	N/A
	VT33116320	3750	320	116	33	N/A	N/A	N/A
TD1600	VT40116320	5000	320	116	40	N/A	N/A	N/A
	VT14116360	1550	360	116	14	N/A	N/A	N/A
	VT24116360	3050	360	116	24	N/A	N/A	N/A
	VT35116360	4600	360	116	35	N/A	N/A	N/A
TD2000	VT46116360	6100	360	116	46	N/A	N/A	N/A
	VT16116400	1950	400	116	16	N/A	N/A	N/A
	VT27116400	3850	400	116	27	N/A	N/A	N/A
	VT38116400	5750	400	116	38	N/A	N/A	N/A
	VT48116400	7700	400	116	48	N/A	N/A	N/A



RADIATOR END



TAYLOR POWER SYSTEMS		SCALE:	DRAWN BY JWM
		DATE: 9-30-11	REVISED
PART NAME UL142 LISTED DOUBLE WALL DIESEL FUEL TANKS		APPROVED BY	
DRAWING NUMBER	MODEL TD800 - TD2000	CUSTOMER	